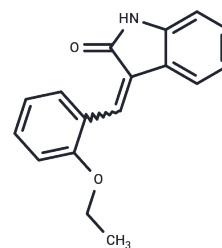


SU5204

## Chemical Properties

CAS No. :	186611-11-0
Formula:	C <sub>17</sub> H <sub>15</sub> NO <sub>2</sub>
Molecular Weight:	265.31
Storage:	Powder: -20°C for 3 years   In solvent: -80°C for 1 year Actual storage temperature shall be subject to the COA.



## Biological Description

Description	SU5204 (3-[(2-Ethoxyphenyl)methylidene]-1H-indol-2-one), an analogue of SU5025, pharmacologically inhibits VEGFR2 (IC <sub>50</sub> s of 4 and 51.5 μM for FLK-1 (VEGFR-2) and HER2)
Targets(IC <sub>50</sub> )	EGFR,HER,VEGFR

## Solubility Information

Solubility	DMSO: 27.5 mg/mL (103.65 mM),Sonication is recommended. (< 1 mg/ml refers to the product slightly soluble or insoluble)
In vivo Formulation	10% DMSO+40% PEG300+5% Tween 80+45% Saline: 2 mg/mL (7.54 mM),Sonication is recommended. <i>Please add the solvents sequentially, clarifying the solution as much as possible before adding the next one. Dissolve by heating and/or sonication if necessary. Working solution is recommended to be prepared and used immediately. The formulation provided above is for reference purposes only. In vivo formulations may vary and should be modified based on specific experimental conditions.</i>

## Preparing Stock Solutions

	1mg	5mg	10mg
1 mM	3.7692 mL	18.8459 mL	37.6918 mL
5 mM	0.7538 mL	3.7692 mL	7.5384 mL
10 mM	0.3769 mL	1.8846 mL	3.7692 mL
50 mM	0.0754 mL	0.3769 mL	0.7538 mL

Please select the appropriate solvent to prepare the stock solution, according to the solubility of the product in different solvents. Please use it as soon as possible.

Note: The dilution table applies only to solid products. For liquid products, please calculate the stock solution based on the stated concentration and/or density.

Reference

Peng Cho Tang, et al. 3-heteroaryl-2-indolinone compounds for the treatment of disease. US5792783A.

**Inhibitor · Natural Compounds · Compound Libraries · Recombinant Proteins**

This product is for Research Use Only · Not for Human or Veterinary or Therapeutic Use

Tel:781-999-4286 E\_mail:info@targetmol.com Address:34 Washington Street,Wellesley Hills,MA 02481