

## Noladin ether

## Chemical Properties

CAS No. : 222723-55-9

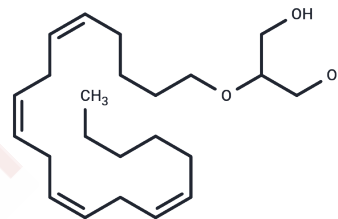
Formula: C<sub>23</sub>H<sub>40</sub>O<sub>3</sub>

Molecular Weight: 364.56

Storage: Keep away from direct sunlight, Store at low temperature

Powder: -20°C for 3 years | In solvent: -80°C for 1 year

Actual storage temperature shall be subject to the COA.



## Biological Description

Description	Noladin ether (2-AG ether) is a selective and potent cannabinoid CB1 receptor agonist, reducing sensory nerve transmission in rat mesenteric artery beds through a non-CB1/CB2 G(i/o) receptor pathway in a concentration-dependent manner.
Targets(IC50)	Cannabinoid Receptor
In vitro	In the porcine anterior segment perfusion organ culture model, Noladin ether (3, 30, 300 nM) treatment resulted in a dependent increase in the concentration of aqueous outflow facilities. Treatment of trabecular reticulum cells with Noladin ether (30 nM) can activate p42/44 MAP kinase, and cause the trabecular reticulum cells to become round, actin stress fibers to decrease, and adhesion plaques to decrease. [1]
In vivo	Intraperitoneal injection of Noladin ether (0.5, 1.0, and 2.0 mg/kg) in male rats increased food intake dose-dependently by affecting CB (1) receptors. [2]

## Solubility Information

Solubility	Ethanol:PBS(pH 7.2) (1:1): 500 µg/mL,Sonication is recommended. PBS (pH 7.2): < 1 mg/mL (insoluble) DMF: 8 mg/mL (21.94 mM),Sonication is recommended. DMSO: 8 mg/mL (21.94 mM),Sonication is recommended. Ethanol: < 1 mg/mL (insoluble) (< 1 mg/ml refers to the product slightly soluble or insoluble)
------------	--

### Preparing Stock Solutions

---

	1mg	5mg	10mg
1 mM	2.743 mL	13.7152 mL	27.4303 mL
5 mM	0.5486 mL	2.743 mL	5.4861 mL
10 mM	0.2743 mL	1.3715 mL	2.743 mL
50 mM	0.0549 mL	0.2743 mL	0.5486 mL

---

Please select the appropriate solvent to prepare the stock solution, according to the solubility of the product in different solvents. Please use it as soon as possible.

Note: The dilution table applies only to solid products. For liquid products, please calculate the stock solution based on the stated concentration and/or density.

### Reference

Njie YF, et al. Noladin ether acts on trabecular meshwork cannabinoid (CB1) receptors to enhance aqueous humor outflow facility. Invest Ophthalmol Vis Sci. 2006 May;47(5):1999-2005.

Jones EK, et al. Noladin ether, a putative endocannabinoid, enhances motivation to eat after acute systemic administration in rats. Br J Pharmacol. 2012 Jul;166(6):1815-21.

**Inhibitor · Natural Compounds · Compound Libraries · Recombinant Proteins**

This product is for Research Use Only · Not for Human or Veterinary or Therapeutic Use

Tel:781-999-4286 E\_mail:info@targetmol.com Address:34 Washington Street,Wellesley Hills,MA 02481