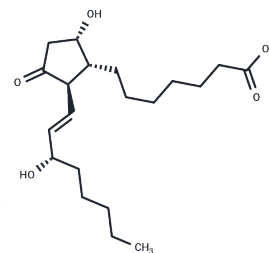


## Prostaglandin D1

## Chemical Properties

CAS No. :	17968-82-0
Formula:	C <sub>20</sub> H <sub>34</sub> O <sub>5</sub>
Molecular Weight:	354.48
Storage:	Powder: -20°C for 3 years   In solvent: -80°C for 1 year Actual storage temperature shall be subject to the COA.



## Biological Description

Description	Prostaglandin D1 is a prostaglandin that has contraction and relaxation effects on isolated human arteries and can inhibit ADP-induced platelet aggregation (IC <sub>50</sub> =320 ng/ml). Prostaglandin D1 can be used in metabolic studies.
Targets(IC <sub>50</sub> )	Others,Endogenous Metabolite

## Solubility Information

Solubility	PBS (pH 7.2): >5 mg/mL (from PGD2),Sonication is recommended. Ethanol: >75 mg/mL (from PGD2),Sonication is recommended. DMF: >100 mg/mL (from PGD2),Sonication is recommended. DMSO: >50 mg/mL (from PGD2),Sonication is recommended. (< 1 mg/ml refers to the product slightly soluble or insoluble)
------------	---

## Preparing Stock Solutions

	1mg	5mg	10mg
1 mM	2.821 mL	14.1052 mL	28.2103 mL
5 mM	0.5642 mL	2.821 mL	5.6421 mL
10 mM	0.2821 mL	1.4105 mL	2.821 mL
50 mM	0.0564 mL	0.2821 mL	0.5642 mL

Please select the appropriate solvent to prepare the stock solution, according to the solubility of the product in different solvents. Please use it as soon as possible.

Note: The dilution table applies only to solid products. For liquid products, please calculate the stock solution based on the stated concentration and/or density.

**Inhibitor · Natural Compounds · Compound Libraries · Recombinant Proteins**

This product is for Research Use Only· Not for Human or Veterinary or Therapeutic Use

Tel:781-999-4286 E\_mail:info@targetmol.com Address:34 Washington Street,Wellesley Hills,MA 02481