

Octodrine

Chemical Properties

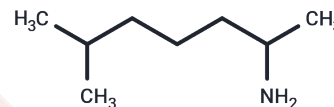
CAS No. : 543-82-8

Formula: C₈H₁₉N

Molecular Weight: 129.24

Storage: Pure form: -20°C for 3 years | In solvent: -80°C for 1 year

Actual storage temperature shall be subject to the COA.



Biological Description

Description	Octodrine (2-Amino-6-methylheptane) is primarily used as a pharmaceutical intermediate for Octamylamine; it also functions as a local anesthetic and vasoconstrictor.
Targets(IC50)	Dopamine Receptor

Solubility Information

Solubility	H ₂ O: 156.9 mM, Sonication is recommended. DMSO: 156.9 mM, Sonication is recommended. (< 1 mg/ml refers to the product slightly soluble or insoluble)
In vivo Formulation	10% DMSO+40% PEG300+5% Tween 80+45% Saline: 2 mg/mL (15.48 mM), Sonication is recommended. <i>Please add the solvents sequentially, clarifying the solution as much as possible before adding the next one. Dissolve by heating and/or sonication if necessary. Working solution is recommended to be prepared and used immediately. The formulation provided above is for reference purposes only. In vivo formulations may vary and should be modified based on specific experimental conditions.</i>

Preparing Stock Solutions

	1mg	5mg	10mg
1 mM	7.7375 mL	38.6877 mL	77.3754 mL
5 mM	1.5475 mL	7.7375 mL	15.4751 mL
10 mM	0.7738 mL	3.8688 mL	7.7375 mL
50 mM	0.1548 mL	0.7738 mL	1.5475 mL

Please select the appropriate solvent to prepare the stock solution, according to the solubility of the product in different solvents. Please use it as soon as possible.

Note: The dilution table applies only to solid products. For liquid products, please calculate the stock solution based on the stated concentration and/or density.

Reference

FELLOWS EJ., et al. The pharmacology of 2-amino-6-methylheptane. J Pharmacol Exp Ther. 1947 Aug;90(4):351-8.
SEMENZA F. Boll Soc Ital Biol Sper. 1951 Mar;27(3 bis):354-7.

Inhibitor · Natural Compounds · Compound Libraries · Recombinant Proteins

This product is for Research Use Only · Not for Human or Veterinary or Therapeutic Use

Tel:781-999-4286 E_mail:info@targetmol.com Address:34 Washington Street,Wellesley Hills,MA 02481