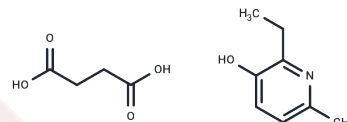


Emoxypine Succinate

Chemical Properties

CAS No. :	127464-43-1
Formula:	C ₈ H ₁₁ NO ₄
Molecular Weight:	255.27
Storage:	Powder: -20°C for 3 years In solvent: -80°C for 1 year Actual storage temperature shall be subject to the COA.



Biological Description

Description	Emoxypine Succinate is an antioxidant.
Targets(IC50)	Others, Reactive Oxygen Species, ROS
In vivo	Intracoronary administration of emoxypine caused the dose-dependent increase in the average coronary blood flow without changing the parameters of cardiohemodynamics. Emoxypine failed to change the structure of the phase coronary blood flow. When administered at the concentration of 5.10(-4)M emoxypine increased the volume rate of the perfusate outflow from the rat isolated heart cavities and decreased the value of potassium contracture of isolated segments of the coronary vessels. The data obtained indicate the direct coronarolytic action of emoxypine[1].

Solubility Information

Solubility	DMSO: 30 mg/mL (117.52 mM), Sonication is recommended. (< 1 mg/ml refers to the product slightly soluble or insoluble)
------------	---

Preparing Stock Solutions

	1mg	5mg	10mg
1 mM	3.9174 mL	19.5871 mL	39.1742 mL
5 mM	0.7835 mL	3.9174 mL	7.8348 mL
10 mM	0.3917 mL	1.9587 mL	3.9174 mL
50 mM	0.0783 mL	0.3917 mL	0.7835 mL

Please select the appropriate solvent to prepare the stock solution, according to the solubility of the product in different solvents. Please use it as soon as possible.

Note: The dilution table applies only to solid products. For liquid products, please calculate the stock solution based on the stated concentration and/or density.

Reference

Pashin E N , Shvedova A A . [The effect of the synthetic antioxidant emoxypine on the tonus of the coronary vessels][J]. farmakologiya i toksikologiya, 1989, 52(5):17-19.

Zor'Kina A V , Prosvirina O N . [The effect of rubomycin, mexidol and emoxypine on some metabolic indexes and the process of spontaneous metastasis under conditions of experimental neoplasia][J]. Eksp Klin Farmakol, 2007, 70(1):57-59.

Inhibitor · Natural Compounds · Compound Libraries · Recombinant Proteins

This product is for Research Use Only· Not for Human or Veterinary or Therapeutic Use

Tel:781-999-4286 E_mail:info@targetmol.com Address:34 Washington Street,Wellesley Hills,MA 02481