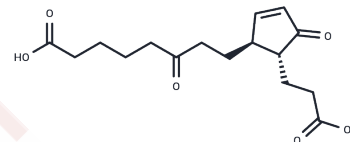


## tetranor-PGAM

## Chemical Properties

CAS No. :	52510-53-9
Formula:	C <sub>16</sub> H <sub>22</sub> O <sub>6</sub>
Molecular Weight:	310.346
Storage:	Powder: -20°C for 3 years   In solvent: -80°C for 1 year Actual storage temperature shall be subject to the COA.



## Biological Description

Description	Prostaglandin E2 (PGE2), one of the most widely investigated PGs, can be used as a biomarker of inflammation, disease state, or therapeutic effectiveness. However due to its rapid metabolism, direct measurement of PGE2 in biological samples is difficult. The major urinary metabolite of PGE2, tetranor-PGEM, serves as an indirect marker of PGE2 biosynthesis. Though like PGE2, tetranor-PGEM is also chemically unstable. tetranor-PGAM is a dehydration product of tetranor-PGEM and can be measured as a surrogate for tetranor-PGEM levels in urine.
Targets(IC50)	Others, Drug Metabolite

## Solubility Information

Solubility	PBS (pH 7.2): 1 mg/mL (3.22 mM), Sonication is recommended. DMSO: 50 mg/mL (161.11 mM), Sonication is recommended. Ethanol: 50 mg/mL (161.11 mM), Sonication is recommended. DMF: 50 mg/mL (161.11 mM), Sonication is recommended. (< 1 mg/ml refers to the product slightly soluble or insoluble)
------------	--

## Preparing Stock Solutions

	1mg	5mg	10mg
1 mM	3.2222 mL	16.1108 mL	32.2217 mL
5 mM	0.6444 mL	3.2222 mL	6.4443 mL
10 mM	0.3222 mL	1.6111 mL	3.2222 mL
50 mM	0.0644 mL	0.3222 mL	0.6444 mL

Please select the appropriate solvent to prepare the stock solution, according to the solubility of the product in different solvents. Please use it as soon as possible.

Note: The dilution table applies only to solid products. For liquid products, please calculate the stock solution based on the stated concentration and/or density.

**Inhibitor · Natural Compounds · Compound Libraries · Recombinant Proteins**

This product is for Research Use Only · Not for Human or Veterinary or Therapeutic Use

Tel:781-999-4286 E\_mail:info@targetmol.com Address:34 Washington Street,Wellesley Hills,MA 02481