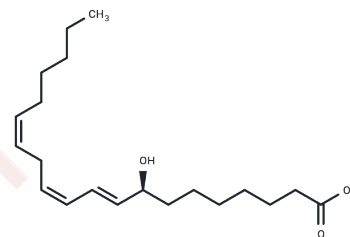


## 8(S)-HETrE

## Chemical Properties

CAS No. :	889573-69-7
Formula:	C <sub>20</sub> H <sub>34</sub> O <sub>3</sub>
Molecular Weight:	322.489
Storage:	Powder: -20°C for 3 years   In solvent: -80°C for 1 year Actual storage temperature shall be subject to the COA.



## Biological Description

Description	8(S)-HETrE is a monohydroxy polyunsaturated fatty acid produced by rabbit neutrophil lipoxygenase when dihomo- $\gamma$ -linolenic acid is used as a substrate. Although the biological activities of 8(S)-HETrE have not been well characterized, it is expected to behave similarly to 8(S)-HETE .
Targets(IC50)	Others

## Solubility Information

Solubility	0.1 M Na <sub>2</sub> CO <sub>3</sub> : 2 mg/mL (6.2 mM), Sonication is recommended. DMSO: Miscible Ethanol: Miscible PBS (pH 7.2): 0.8 mg/mL (2.48 mM), Sonication is recommended. DMF: Miscible ( < 1 mg/ml refers to the product slightly soluble or insoluble)
------------	---

## Preparing Stock Solutions

	1mg	5mg	10mg
1 mM	3.1009 mL	15.5044 mL	31.0087 mL
5 mM	0.6202 mL	3.1009 mL	6.2017 mL
10 mM	0.3101 mL	1.5504 mL	3.1009 mL
50 mM	0.062 mL	0.3101 mL	0.6202 mL

Please select the appropriate solvent to prepare the stock solution, according to the solubility of the product in different solvents. Please use it as soon as possible.

Note: The dilution table applies only to solid products. For liquid products, please calculate the stock solution based on the stated concentration and/or density.

**Inhibitor · Natural Compounds · Compound Libraries · Recombinant Proteins**

This product is for Research Use Only · Not for Human or Veterinary or Therapeutic Use

Tel:781-999-4286 E\_mail:info@targetmol.com Address:34 Washington Street,Wellesley Hills,MA 02481