

Sappanchalcone

Chemical Properties

CAS No. : 94344-54-4

Formula: C₁₆H₁₄O₅

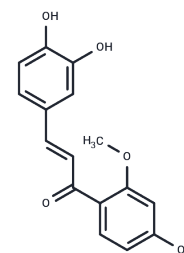
Molecular Weight: 286.28

Storage:

Keep away from direct sunlight, Keep away from moisture, Store at low temperature

Powder: -20°C for 3 years | In solvent: -80°C for 1 year

Actual storage temperature shall be subject to the COA.



Biological Description

Description	Sappanchalcone shows xanthine oxidase inhibitory activity, is a xanthine oxidase inhibitor.
Targets(IC50)	Apoptosis, Bcl-2 Family, IL Receptor, TNF
In vitro	The influence of the ethyl acetate (EtOAc) extract of Lignum Sappan and its constituents on growth-related signaling were evaluated by a luciferase assay in cells stably-transfected with NF- κ B, STAT1, or STAT3 responsive luciferase reporter plasmid. The inhibitory effect on the cell cycle was determined by flow cytometric analysis. The anti-tumor activities were assessed in vitro and in vivo. The EtOAc extract of Lignum Sappan had inhibitory activities on growth-related signaling and cell mitosis. Three major active compounds were Sappanchalcone, brazilin, and butein. Sappanchalcone blocked cell cycle progression in the G2/M phase, brazilin inhibited TNF α /NF- κ B signaling, while butein inhibited IL-6/STAT3 signaling, as well as TNF α /NF- κ B signaling. The three compounds all demonstrated cytotoxic activities against human tumor cells in vitro. In a S180 tumor cell-bearing mice model, the anti-tumor efficacy of the EtOAc extract was better than the individual compounds acting alone[1]

Preparing Stock Solutions

	1mg	5mg	10mg
1 mM	3.4931 mL	17.4654 mL	34.9308 mL
5 mM	0.6986 mL	3.4931 mL	6.9862 mL
10 mM	0.3493 mL	1.7465 mL	3.4931 mL
50 mM	0.0699 mL	0.3493 mL	0.6986 mL

Please select the appropriate solvent to prepare the stock solution, according to the solubility of the product in different solvents. Please use it as soon as possible.

Note: The dilution table applies only to solid products. For liquid products, please calculate the stock solution based on the stated concentration and/or density.

Reference

Inhibitory activities of Lignum Sappan extractives on growth and growth-related signaling of tumor cells. Chin J Nat Med. 2014 Aug;12(8):607-12.

Inhibitor · Natural Compounds · Compound Libraries · Recombinant Proteins

This product is for Research Use Only · Not for Human or Veterinary or Therapeutic Use

Tel:781-999-4286 E_mail:info@targetmol.com Address:34 Washington Street,Wellesley Hills,MA 02481