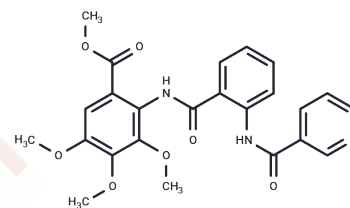


Methyl 3,4,5-trimethoxy-2-(2-(nicotinamido)benzamido)benzoate

Chemical Properties

CAS No. :	81469-77-4
Formula:	C ₂₄ H ₂₃ N ₃ O ₇
Molecular Weight:	465.46
Storage:	Powder: -20°C for 3 years In solvent: -80°C for 1 year Actual storage temperature shall be subject to the COA.



Biological Description

Description	Preterramide C is a fungal metabolite that has been found in <i>A. terreus</i> . It is active against <i>S. aureus</i> (MIC = 52.4 μM) but not <i>E. aerogenes</i> , <i>P. aeruginosa</i> , or <i>C. albicans</i> (MICs = >100 μM for all). ² Preterramide C inhibits the growth of L5178Y mouse lymphoma cells with an IC ₅₀ value of 0.1 μg/ml. ³ It also inhibits nitric oxide (NO) production induced by LPS in RAW 264.7 cells (IC ₅₀ = 5.48 μM).
Targets (IC ₅₀)	Others, Endogenous Metabolite

Preparing Stock Solutions

	1mg	5mg	10mg
1 mM	2.1484 mL	10.7421 mL	21.4841 mL
5 mM	0.4297 mL	2.1484 mL	4.2968 mL
10 mM	0.2148 mL	1.0742 mL	2.1484 mL
50 mM	0.043 mL	0.2148 mL	0.4297 mL

Please select the appropriate solvent to prepare the stock solution, according to the solubility of the product in different solvents. Please use it as soon as possible.

Note: The dilution table applies only to solid products. For liquid products, please calculate the stock solution based on the stated concentration and/or density.

Reference

- He, F., Bao, J., Zhang, X.-Y., et al. Asperterrestide A, a cytotoxic cyclic tetrapeptide from the marine-derived fungus *Aspergillus terreus* SC5GAF0162J. *Nat. Prod.* 76(6)1182-1186(2013)
- Wang, Y., Zheng, J., Liu, P., et al. Three new compounds from *Aspergillus terreus* PT06-2 grown in a high salt medium *Mar. Drugs* 9(8)1368-1378(2011)
- Zhou, Y., Mandi, A., Debbab, A., et al. New australides from the sponge-associated fungus *Aspergillus* sp. *Eur. J. Org. Chem.* 306009-6019(2011)

Inhibitor · Natural Compounds · Compound Libraries · Recombinant Proteins

This product is for Research Use Only · Not for Human or Veterinary or Therapeutic Use

Tel:781-999-4286 E_mail:info@targetmol.com Address:34 Washington Street,Wellesley Hills,MA 02481