

Ipamorelin 2 Pivalic acid

Chemical Properties

CAS No. :

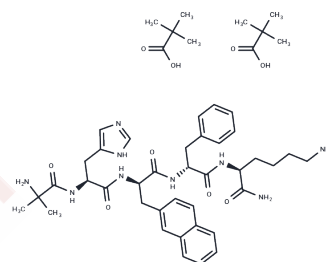
Formula: C₃₈H₄₉N₉O₅.2C₅H₁₀O₂

Molecular Weight: 916.12

Keep away from moisture

Storage: Powder: -20°C for 3 years | In solvent: -80°C for 1 year

Actual storage temperature shall be subject to the COA.



Biological Description

Description	Ipamorelin 2 Pivalic acid (NNC-26-0161) is a growth-hormone-releasing peptide, induces longitudinal bone growth in rats.
Targets(IC50)	Others
In vitro	In vitro, ipamorelin released GH from primary rat pituitary cells with a potency and efficacy similar to GHRP-6 (ECs) = 1.3+/-0.4nmol/l and Emax = 85+/-5% vs 2.2+/-0.3 nmol/l and 100%).?A pharmacological profiling using GHRP and growth hormone-releasing hormone (GHRH) antagonists clearly demonstrated that ipamorelin, like GHRP-6, stimulates GH release via a GHRP-like receptor[1]
In vivo	In pentobarbital anaesthetised rats, ipamorelin released GH with a potency and efficacy comparable to GHRP-6 (ED50 = 80+/-42nmol/kg and Emax = 1545+/-250ng GH/ml vs 115+/-36nmol/kg and 1167+/-120ng GH/ml).?In conscious swine, ipamorelin released GH with an ED50 = 2.3+/-0.03 nmol/kg and an Emax = 65+/-0.2 ng GH/ml plasma.? Again, this was very similar to GHRP-6 (ED50 = 3.9+/-1.4 nmol/kg and Emax = 74+/-7ng GH/ml plasma)[1].

Solubility Information

Solubility	DMSO: 18.33 mg/mL (20.01 mM),Sonication is recommended. (< 1 mg/ml refers to the product slightly soluble or insoluble)
------------	---

Preparing Stock Solutions

	1mg	5mg	10mg
1 mM	1.0916 mL	5.4578 mL	10.9156 mL
5 mM	0.2183 mL	1.0916 mL	2.1831 mL
10 mM	0.1092 mL	0.5458 mL	1.0916 mL
50 mM	0.0218 mL	0.1092 mL	0.2183 mL

Please select the appropriate solvent to prepare the stock solution, according to the solubility of the product in different solvents. Please use it as soon as possible.

Note: The dilution table applies only to solid products. For liquid products, please calculate the stock solution based on the stated concentration and/or density.

Reference

Raun K , Hansen B , Johansen N , et al. Ipamorelin, the first selective growth hormone secretagogue[J]. European Journal of Endocrinology, 1998, 139(5):552-561.

Johansen P B , Nowak J , Skj?Rb?K C , et al. Ipamorelin, a new growth-hormone-releasing peptide, induces longitudinal bone growth in rats[J]. Growth Hormone & Igf Research, 1999, 9(2):0-113.

Inhibitor · Natural Compounds · Compound Libraries · Recombinant Proteins

This product is for Research Use Only· Not for Human or Veterinary or Therapeutic Use

Tel:781-999-4286 E_mail:info@targetmol.com Address:34 Washington Street,Wellesley Hills,MA 02481