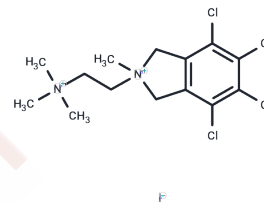


Chlorisondamine diiodide

Chemical Properties

CAS No. :	96750-66-2
Formula:	C ₁₄ H ₂₀ Cl ₄ N ₂
Molecular Weight:	611.94
Storage:	Powder: -20°C for 3 years In solvent: -80°C for 1 year Actual storage temperature shall be subject to the COA.



Biological Description

Description	Chlorisondamine diiodide is a selective nicotinic acetylcholine receptor (nAChR) antagonist and ganglionic blocker that persistently antagonizes partial central effects of nicotine, such as synaptic dopamine release and taste aversion.
Targets(IC50)	Dehydrogenase

Solubility Information

Solubility	DMSO: 8 mg/mL (13.07 mM), Sonication and heating are recommended. H ₂ O: Soluble, (< 1 mg/ml refers to the product slightly soluble or insoluble)
------------	--

Preparing Stock Solutions

	1mg	5mg	10mg
1 mM	1.6341 mL	8.1707 mL	16.3415 mL
5 mM	0.3268 mL	1.6341 mL	3.2683 mL
10 mM	0.1634 mL	0.8171 mL	1.6341 mL
50 mM	0.0327 mL	0.1634 mL	0.3268 mL

Please select the appropriate solvent to prepare the stock solution, according to the solubility of the product in different solvents. Please use it as soon as possible.

Note: The dilution table applies only to solid products. For liquid products, please calculate the stock solution based on the stated concentration and/or density.

Reference

Dietlein F, Kalb B2, Jovic M et al. A Synergistic Interaction between Chk1- and MK2 Inhibitors in KRAS-Mutant Cancer. *Cell*. 2015 Jul 2;162(1):146-59.

Reinhardt HC, Yaffe MB. Phospho-Ser/Thr-binding domains: navigating the cell cycle and DNA damage response. *Nat Rev Mol Cell Biol*. 2013 Sep;14(9):563-80.

Jackson SP, Bartek J. The DNA-damage response in human biology and disease. *Nature*. 2009 Oct 22;461(7267):1071-8.

Reinhardt HC, et al. DNA damage activates a spatially distinct late cytoplasmic cell-cycle checkpoint network controlled by MK2-mediated RNA stabilization. *Mol Cell*. 2010 Oct 8;40(1):34-49.

Inhibitor · Natural Compounds · Compound Libraries · Recombinant Proteins

This product is for Research Use Only · Not for Human or Veterinary or Therapeutic Use

Tel: 781-999-4286 E_mail: info@targetmol.com Address: 34 Washington Street, Wellesley Hills, MA 02481