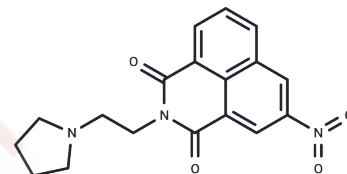


Pinafide

Chemical Properties

CAS No. :	54824-20-3
Formula:	C ₁₈ H ₁₇ N ₃ O ₄
Molecular Weight:	339.35
Storage:	Powder: -20°C for 3 years In solvent: -80°C for 1 year Actual storage temperature shall be subject to the COA.



Biological Description

Description	Pinafide is a rodenticide and anti-protozoal agent. Pinafide shows strong cytostatic activity against both HeLa and KB cells and is moderately toxic to both mice and rats. It has been proved active against experimental tumors and shown to be inhibitor of two DNA viruses. Pinafide blocks cell growth by inhibiting DNA and RNA synthesis. It has been shown to bind to double-helical DNA by intercalation. Pinafide inhibited the activity of M. tuberculosis NAD ⁺ -dependent DNA ligase A at concentrations of 50 μM. At the chemical screening was found that pinafide inhibited B-Myb transcriptional activity in luciferase assays. The cross placental-barrier studies showed that 3H-pinafide was present in the 14-day fetuses.
Targets(IC50)	Others

Preparing Stock Solutions

	1mg	5mg	10mg
1 mM	2.9468 mL	14.7341 mL	29.4681 mL
5 mM	0.5894 mL	2.9468 mL	5.8936 mL
10 mM	0.2947 mL	1.4734 mL	2.9468 mL
50 mM	0.0589 mL	0.2947 mL	0.5894 mL

Please select the appropriate solvent to prepare the stock solution, according to the solubility of the product in different solvents. Please use it as soon as possible.

Note: The dilution table applies only to solid products. For liquid products, please calculate the stock solution based on the stated concentration and/or density.

Inhibitor · Natural Compounds · Compound Libraries · Recombinant Proteins

This product is for Research Use Only · Not for Human or Veterinary or Therapeutic Use

Tel: 781-999-4286 E_mail: info@targetmol.com Address: 34 Washington Street, Wellesley Hills, MA 02481