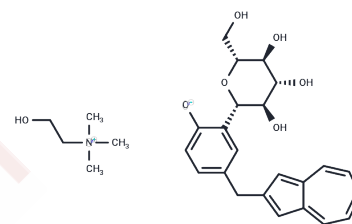


## YM-543 trimethylamine

## Chemical Properties

CAS No. :	918802-70-7
Formula:	C <sub>28</sub> H <sub>37</sub> N <sub>07</sub>
Molecular Weight:	499.6
Storage:	Powder: -20°C for 3 years   In solvent: -80°C for 1 year Actual storage temperature shall be subject to the COA.



## Biological Description

Description	YM-543, a sodium-glucose transporter 2 (SGLT-2) inhibitor, is used potentially for the treatment of type 2 diabetes.
Targets(IC50)	Others

## Preparing Stock Solutions

	1mg	5mg	10mg
1 mM	2.0016 mL	10.008 mL	20.016 mL
5 mM	0.4003 mL	2.0016 mL	4.0032 mL
10 mM	0.2002 mL	1.0008 mL	2.0016 mL
50 mM	0.040 mL	0.2002 mL	0.4003 mL

Please select the appropriate solvent to prepare the stock solution, according to the solubility of the product in different solvents. Please use it as soon as possible.

Note: The dilution table applies only to solid products. For liquid products, please calculate the stock solution based on the stated concentration and/or density.

### Reference

Yokono M, Tahara A, Kurosaki E, Yamajuku D, Kihara R, Imamura M, Tomiyama H, Kobayashi Y, Noda A, Shibasaki M. Pharmacological Characterization of YM543, a Newly Synthesized, Orally Active SGLT2 Selective Inhibitor. *Endocr Res.* 2013 Feb 1. [Epub ahead of print] PubMed PMID: 23374077.

Ikegai K, Imamura M, Suzuki T, et al. Synthesis and biological evaluation of C-glucosides with azulene rings as selective SGLT2 inhibitors for the treatment of type 2 diabetes mellitus: discovery of YM543. *Bioorg Med Chem.* 2013 Jul 1;21(13):3934-48. doi: 10.1016/j.bmc.2013.03.067. PubMed PMID: 23651509. 3: Brüser A, Kirchberger J, Schöneberg T. Altered allosteric regulation of muscle 6-phosphofructokinase causes Tarui disease. *Biochem Biophys Res Commun.* 2012 Oct 12;427(1):133-7. PubMed PMID: 22995305.

Someya A, Sata M, Takeda K, Pacheco-Rodriguez G, Ferrans VJ, Moss J, Vaughan M. ARF-GEP(100), a guanine nucleotide-exchange protein for ADP-ribosylation factor 6. *Proc Natl Acad Sci U S A.* 2001 Feb 27;98(5):2413-8. PubMed PMID: 11226253; PubMed Central PMCID: PMC30152.

Matsumura H, Terada M, Shirakata S, Inoue T, Yoshinaga T, Izui K, Kai Y. Plausible phosphoenolpyruvate binding site revealed by 2.6 Å structure of Mn<sup>2+</sup>-bound phosphoenolpyruvate carboxylase from *Escherichia coli*. *FEBS Lett.* 1999 Sep 17;458(2):93-6. PubMed PMID: 10481043.

**Inhibitor · Natural Compounds · Compound Libraries · Recombinant Proteins**

This product is for Research Use Only · Not for Human or Veterinary or Therapeutic Use

Tel:781-999-4286 E\_mail:info@targetmol.com Address:34 Washington Street,Wellesley Hills,MA 02481