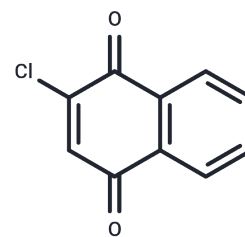


## 2-Chloronaphthoquinone

## Chemical Properties

|                   |   |
|-------------------|---|
| CAS No. :         | 1010-60-2   |
| Formula:          | C <sub>10</sub> H <sub>5</sub> ClO <sub>2</sub>   |
| Molecular Weight: | 192.6   |
| Storage:          | Powder: -20°C for 3 years   In solvent: -80°C for 1 year<br>Actual storage temperature shall be subject to the COA. |



## Biological Description

|               |   |
|---------------|---|
| Description   | 2-Chloronaphthoquinone (2-Chloro-1,4-naphthoquinone) is a substituted naphthoquinone which is used as an insecticide and acaricide. |
| Targets(IC50) | Others  |

## Solubility Information

|            |   |
|------------|---|
| Solubility | DMSO: 60 mg/mL (311.53 mM), Sonication is recommended.<br>(< 1 mg/ml refers to the product slightly soluble or insoluble) |
|------------|---|

## Preparing Stock Solutions

|       | 1mg       | 5mg        | 10mg       |
|-------|-----------|------------|------------|
| 1 mM  | 5.1921 mL | 25.9605 mL | 51.9211 mL |
| 5 mM  | 1.0384 mL | 5.1921 mL  | 10.3842 mL |
| 10 mM | 0.5192 mL | 2.5961 mL  | 5.1921 mL  |
| 50 mM | 0.1038 mL | 0.5192 mL  | 1.0384 mL  |

Please select the appropriate solvent to prepare the stock solution, according to the solubility of the product in different solvents. Please use it as soon as possible.

Note: The dilution table applies only to solid products. For liquid products, please calculate the stock solution based on the stated concentration and/or density.

## Reference

Bhuyan B K, et al. Cell proliferation kinetics and drug sensitivity of exponential and stationary populations of cultured L1210 cells[J].

Shimizu N, et al. Enhanced cytotoxicity of alkyl viologens and N,N'-diamino analogs toward cultured murine leukemia L1210 cells under vortex-stirring with a high molecular weight polyacrylic acid.[J]. Biological & Pharmaceutical Bulletin, 1997, 20(2):168.

**Inhibitor · Natural Compounds · Compound Libraries · Recombinant Proteins**

This product is for Research Use Only · Not for Human or Veterinary or Therapeutic Use

Tel:781-999-4286 E\_mail:info@targetmol.com Address:34 Washington Street,Wellesley Hills,MA 02481