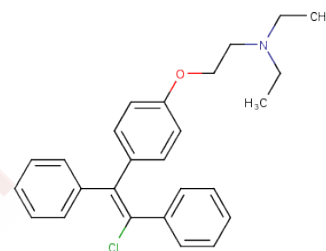


Enclomiphene

Chemical Properties

CAS No. :	15690-57-0
Formula:	C ₂₆ H ₂₈ ClNO
Molecular Weight:	405.97
Storage:	Powder: -20°C for 3 years In solvent: -80°C for 1 year Actual storage temperature shall be subject to the COA.



Biological Description

Description	Enclomiphene ((E)-Clomiphene) is a potent and orally active antagonist of non-steroidal estrogen receptor. Enclomiphene has research value in ovarian dysfunction, testosterone deficiency, male hypogonadism and type 2 diabetes.
Targets(IC50)	Estrogen Receptor/ERR
In vitro	Enclomiphene administered in a dose-dependent manner (0-100 μM, 6 h) reduces both basal and gonadotrophin-stimulated progesterone secretion in small and large ovine luteal cells, as well as inhibiting fertilization, blastocyst formation, and oocyte degeneration rates in mice when applied at 0-100 μg/mL for 24 h. Additionally, enclomiphene (1 nM-10 μM, 6 h) counteracts the E2-induced suppression of follicle-stimulating hormone (FSH) secretion in primary sheep pituitary cells, showcasing its varying pharmacological effects across different biological systems and conditions.
In vivo	Enclomiphene, administered via subcutaneous injection at dosages of 0.25 and 0.5 mg/animal daily, inhibits spermatogenesis and decreases serum luteinizing hormone (LH) and testosterone levels in both intact and castrated Charles River male rats aged 21 days, after 24 days of treatment. Similarly, oral administration of Enclomiphene at dosages ranging from 0.03 to 3 mg/kg daily for 90 days in an ovariectomy (OVX) rat model results in a reduction of body weight to sham levels, decreased serum cholesterol, and demonstrates dose-dependent improvements in bone mineral density (BMD) and bone mineral content (BMC) in the proximal tibia, approaching post-treatment sham levels.

Preparing Stock Solutions

	1mg	5mg	10mg
1 mM	2.4632 mL	12.3162 mL	24.6324 mL
5 mM	0.4926 mL	2.4632 mL	4.9265 mL
10 mM	0.2463 mL	1.2316 mL	2.4632 mL
50 mM	0.0493 mL	0.2463 mL	0.4926 mL

Please select the appropriate solvent to prepare the stock solution, according to the solubility of the product in different solvents. Please use it as soon as possible.

Note: The dilution table applies only to solid products. For liquid products, please calculate the stock solution based on the stated concentration and/or density.

Inhibitor · Natural Compounds · Compound Libraries · Recombinant Proteins

This product is for Research Use Only · Not for Human or Veterinary or Therapeutic Use

Tel:781-999-4286 E_mail:info@targetmol.com Address:34 Washington Street,Wellesley Hills,MA 02481