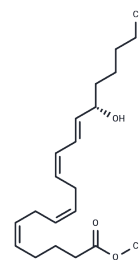


15(S)-HETE methyl ester

Chemical Properties

| | |
|-------------------|---|
| CAS No. : | 70946-44-0 |
| Formula: | C ₂₁ H ₃₄ O ₃ |
| Molecular Weight: | 334.5 |
| Storage: | Powder: -20°C for 3 years In solvent: -80°C for 1 year Actual storage temperature shall be subject to the COA. |



Biological Description

| | |
|---------------|--|
| Description | 15(S)-HETE methyl ester is a synthetic derivative of 15(S)-HETE, a major arachidonic acid metabolite from the 15-lipoxygenase pathway. Methyl esters of lipids are commonly used in formulations of nutritional supplements. |
| Targets(IC50) | Others |

Solubility Information

| | |
|------------|---|
| Solubility | DMSO: Miscible Ethanol: Miscible Ethanol:PBS (pH 7.2) (1:3): 0.2 mg/mL (0.6 mM), Sonication is recommended. PBS (pH 7.2): 0.1 mg/mL (0.3 mM), Sonication is recommended. DMF: Miscible (< 1 mg/ml refers to the product slightly soluble or insoluble) |
|------------|---|

Preparing Stock Solutions

| | 1mg | 5mg | 10mg |
|-------|-----------|------------|------------|
| 1 mM | 2.9895 mL | 14.9477 mL | 29.8954 mL |
| 5 mM | 0.5979 mL | 2.9895 mL | 5.9791 mL |
| 10 mM | 0.299 mL | 1.4948 mL | 2.9895 mL |
| 50 mM | 0.0598 mL | 0.299 mL | 0.5979 mL |

Please select the appropriate solvent to prepare the stock solution, according to the solubility of the product in different solvents. Please use it as soon as possible.

Note: The dilution table applies only to solid products. For liquid products, please calculate the stock solution based on the stated concentration and/or density.

Inhibitor · Natural Compounds · Compound Libraries · Recombinant Proteins

This product is for Research Use Only · Not for Human or Veterinary or Therapeutic Use

Tel:781-999-4286 E_mail:info@targetmol.com Address:34 Washington Street,Wellesley Hills,MA 02481