

## NAADP sodium

## Chemical Properties

CAS No. :

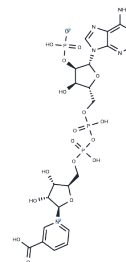
Formula: C<sub>21</sub>H<sub>27</sub>N<sub>6</sub>O<sub>18</sub>P<sub>3</sub>

Molecular Weight: 744.39

Store at low temperature

Storage: Powder: -20°C for 3 years | In solvent: -80°C for 1 year

Actual storage temperature shall be subject to the COA.



## Biological Description

Description	NAADP sodium is a Ca <sup>2+</sup> mobilizing second messenger that targets a novel Ca(2+) channel located on acidic organelles and indirectly activates TPC by binding to NAADP-binding proteins (NAADP-BPs) that form part of the TPC complex, which can be used to study cancer and immune dysfunction. F13714 fumarate is used in the study of leukemia. GSK321 is used in the study of leukemia. GSK321 is used in the study of leukemia.
Targets(IC50)	Calcium Channel

## Solubility Information

Solubility	H <sub>2</sub> O: 20 mg/mL (26.87 mM), Sonication is recommended. (< 1 mg/ml refers to the product slightly soluble or insoluble)
------------	--

## Preparing Stock Solutions

	1mg	5mg	10mg
1 mM	1.3434 mL	6.7169 mL	13.4338 mL
5 mM	0.2687 mL	1.3434 mL	2.6868 mL
10 mM	0.1343 mL	0.6717 mL	1.3434 mL
50 mM	0.0269 mL	0.1343 mL	0.2687 mL

Please select the appropriate solvent to prepare the stock solution, according to the solubility of the product in different solvents. Please use it as soon as possible.

Note: The dilution table applies only to solid products. For liquid products, please calculate the stock solution based on the stated concentration and/or density.

Reference

Patel S, et al. Unique kinetics of nicotinic acid-adenine dinucleotide phosphate (NAADP) binding enhance the sensitivity of NAADP receptors for their ligand. Biochem J. 2000 Dec 15;352 Pt 3(Pt 3):725-9.

**Inhibitor · Natural Compounds · Compound Libraries · Recombinant Proteins**

This product is for Research Use Only · Not for Human or Veterinary or Therapeutic Use

Tel:781-999-4286 E\_mail:info@targetmol.com Address:34 Washington Street,Wellesley Hills,MA 02481