

V5 Epitope Tag Peptide

Chemical Properties

CAS No. :

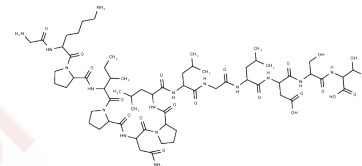
Formula: C64H108N16O20

Molecular Weight: 1421.64

Keep away from moisture

Storage: Powder: -20°C for 3 years | In solvent: -80°C for 1 year

Actual storage temperature shall be subject to the COA.



Biological Description

Description	The recognized V5 epitope represents 95GKPIPPLLGLDST108 of RNA polymerase α subunit of simian parainfluenza virus type 5. This short peptide sequence was chosen because high-affinity antibodies can be reliably produced in many different species ¹ .
Targets(IC50)	Others
In vitro	A 14-amino-acid V5 epitope derived from simian parainfluenza virus type 5 was inserted into the C terminus of the capsid protein (before the stop codon of ORF2) to construct a recombinant marker virus. We demonstrated that the V5 epitope was displayed on the surface of the capsid protein. Furthermore, the recombinant marker virus behaved similarly to the parental virus in vitro and in mice and could be differentiated from the parental virus via polymerase chain reaction (PCR) and serological methods [2][3].
In vivo	A V5/His-epitope tag was added to the amino terminus of each coding sequence to distinguish the plasmid-encoded protein from endogenous LRRK2. Plasmids were transiently transfected into COS7 cells, and cell lysates were analyzed by SDS-PAGE and Western blotting with antibodies specific for the V5 epitope tag or LRRK24.

Solubility Information

Solubility	H2O: ≥ 55.4 mg/mL, Sonication is recommended. DMSO: ≥ 71.082 mg/mL, Sonication is recommended. Ethanol: ≥ 107.2 mg/mL, Sonication is recommended. (< 1 mg/ml refers to the product slightly soluble or insoluble)
------------	--

Preparing Stock Solutions

	1mg	5mg	10mg
1 mM	0.7034 mL	3.5171 mL	7.0341 mL
5 mM	0.1407 mL	0.7034 mL	1.4068 mL
10 mM	0.0703 mL	0.3517 mL	0.7034 mL
50 mM	0.0141 mL	0.0703 mL	0.1407 mL

Please select the appropriate solvent to prepare the stock solution, according to the solubility of the product in different solvents. Please use it as soon as possible.

Note: The dilution table applies only to solid products. For liquid products, please calculate the stock solution based on the stated concentration and/or density.

Inhibitor · Natural Compounds · Compound Libraries · Recombinant Proteins

This product is for Research Use Only · Not for Human or Veterinary or Therapeutic Use

Tel:781-999-4286 E_mail:info@targetmol.com Address:34 Washington Street,Wellesley Hills,MA 02481