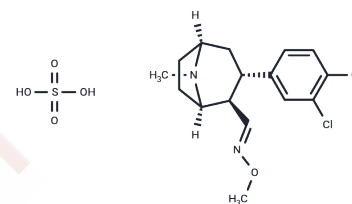


Brasofensine sulfate

Chemical Properties

CAS No. :	171655-92-8
Formula:	C ₁₆ H ₂₂ Cl ₂ N ₂ O ₅ S
Molecular Weight:	425.33
Storage:	Powder: -20°C for 3 years In solvent: -80°C for 1 year Actual storage temperature shall be subject to the COA.



Biological Description

Description	Brasofensine sulfate is a dopamine reuptake inhibitor.
Targets(IC50)	Others, Monoamine Oxidase

Preparing Stock Solutions

	1mg	5mg	10mg
1 mM	2.3511 mL	11.7556 mL	23.5112 mL
5 mM	0.4702 mL	2.3511 mL	4.7022 mL
10 mM	0.2351 mL	1.1756 mL	2.3511 mL
50 mM	0.047 mL	0.2351 mL	0.4702 mL

Please select the appropriate solvent to prepare the stock solution, according to the solubility of the product in different solvents. Please use it as soon as possible.

Note: The dilution table applies only to solid products. For liquid products, please calculate the stock solution based on the stated concentration and/or density.

Reference

- Zhu M, Whigan DB, Chang SY, Dockens RC. Disposition and metabolism of [14C]brasofensine in rats, monkeys, and humans. *Drug Metab Dispos.* 2008 Jan;36(1):24-35. PubMed PMID: 17908924.
- Pearce RK, Smith LA, Jackson MJ, Banerji T, Scheel-Krüger J, Jenner P. The monoamine reuptake blocker brasofensine reverses akinesia without dyskinesia in MPTP-treated and levodopa-primed common marmosets. *Mov Disord.* 2002 Sep;17(5):877-86. PubMed PMID: 12360536.
- Frackiewicz EJ, Jhee SS, Shiovitz TM, Webster J, Topham C, Dockens RC, Whigan D, Salazar DE, Cutler NR. Brasofensine treatment for Parkinson's disease in combination with levodopa/carbidopa. *Ann Pharmacother.* 2002 Feb;36(2):225-30. PubMed PMID: 11847938.
- Yu P. Brasofensine NeuroSearch. *Curr Opin Investig Drugs.* 2000 Dec;1(4):504-7. Review. PubMed PMID: 11249705.

Inhibitor · Natural Compounds · Compound Libraries · Recombinant Proteins

This product is for Research Use Only · Not for Human or Veterinary or Therapeutic Use

Tel:781-999-4286 E_mail:info@targetmol.com Address:34 Washington Street,Wellesley Hills,MA 02481