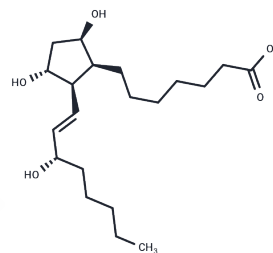


8-iso Prostaglandin F1 β

Chemical Properties

CAS No. :	26771-95-9
Formula:	C ₂₀ H ₃₆ O ₅
Molecular Weight:	356.5
Storage:	Store at low temperature Powder: -20°C for 3 years In solvent: -80°C for 1 year <small>Actual storage temperature shall be subject to the COA.</small>



Biological Description

Description	8-iso Prostaglandin F1 β , an isoprostane produced from arachidonic acid, induces concentration-dependent vasoconstrictor effects in pulmonary arteries (PA), pulmonary veins (PV) and mesenteric arteries (MA) through the activation of TXA ₂ R, tyrosine kinase and Rho kinase.
Targets(IC50)	Rho,PPAR,Prostaglandin Receptor,ROCK,Tyrosinase

Solubility Information

Solubility	Ethanol: 20 mg/mL (56.1 mM),Sonication is recommended. PBS pH 7.2: 0.5 mg/mL (1.4 mM),Sonication is recommended. DMSO: 20 mg/mL (56.1 mM),Sonication is recommended. PBS (pH 7.2): 1 mg/mL (2.81 mM),Sonication is recommended. DMF: 20 mg/mL (56.1 mM),Sonication is recommended. (< 1 mg/ml refers to the product slightly soluble or insoluble)
------------	--

Preparing Stock Solutions

	1mg	5mg	10mg
1 mM	2.805 mL	14.0252 mL	28.0505 mL
5 mM	0.561 mL	2.805 mL	5.6101 mL
10 mM	0.2805 mL	1.4025 mL	2.805 mL
50 mM	0.0561 mL	0.2805 mL	0.561 mL

Please select the appropriate solvent to prepare the stock solution, according to the solubility of the product in different solvents. Please use it as soon as possible.

Note: The dilution table applies only to solid products. For liquid products, please calculate the stock solution based on the stated concentration and/or density.

Reference

González-Luis G, et al., Age-related differences in vasoconstrictor responses to isoprostanes in piglet pulmonary and mesenteric vascular smooth muscle. *Pediatr Res.* 2005 Jun;57(6):845-52.

Inhibitor · Natural Compounds · Compound Libraries · Recombinant Proteins

This product is for Research Use Only · Not for Human or Veterinary or Therapeutic Use

Tel:781-999-4286 E_mail:info@targetmol.com Address:34 Washington Street,Wellesley Hills,MA 02481