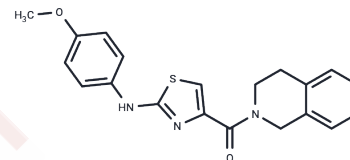


TRPC3/6-IN-1

## Chemical Properties

CAS No. : 736945-96-3  
 Formula: C<sub>20</sub>H<sub>19</sub>N<sub>3</sub>O<sub>2</sub>S  
 Molecular Weight: 365.45  
 Storage: Powder: -20°C for 3 years | In solvent: -80°C for 1 year  
*Actual storage temperature shall be subject to the COA.*



## Biological Description

Description	TRPC3/6-IN-1 is a highly potent and selective inhibitor that blocks the activity of canonical transient receptor channels TRPC3 and TRPC6, showing significant potency against human isoforms hTRPC3 and hTRPC6 with IC <sub>50</sub> values of 1260 nM and 500 nM, respectively. This compound is valuable for research on chronic models of heart failure [1].
Targets(IC <sub>50</sub> )	Others,TRP/TRPV Channel
In vitro	TRPC3/6-IN-1 exhibits blocking activity against hTRPC3 and hTRPC6, achieving half-maximal inhibitory concentrations (IC <sub>50</sub> ) of 1260 nM and 500 nM, respectively [1].
In vivo	TRPC3/6-IN-1 (compound 3) exhibits favorable pharmacokinetics in rats. At an intravenous dose of 0.93 mg/kg, it reaches a C <sub>max</sub> of 250 ng/ml with a clearance rate of 120 ml/min/kg. The MRT is 0.3 hours and the DNAUC is 0.14 h kg/L, indicating an oral bioavailability (~F) of approximately 1%.

## Preparing Stock Solutions

	1mg	5mg	10mg
1 mM	2.7364 mL	13.6818 mL	27.3635 mL
5 mM	0.5473 mL	2.7364 mL	5.4727 mL
10 mM	0.2736 mL	1.3682 mL	2.7364 mL
50 mM	0.0547 mL	0.2736 mL	0.5473 mL

Please select the appropriate solvent to prepare the stock solution, according to the solubility of the product in different solvents. Please use it as soon as possible.

Note: The dilution table applies only to solid products. For liquid products, please calculate the stock solution based on the stated concentration and/or density.

**Inhibitor · Natural Compounds · Compound Libraries · Recombinant Proteins**

This product is for Research Use Only · Not for Human or Veterinary or Therapeutic Use

Tel:781-999-4286 E\_mail:info@targetmol.com Address:34 Washington Street,Wellesley Hills,MA 02481