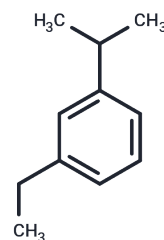


Cumene, m-ethyl-

Chemical Properties

CAS No. :	4920-99-4
Formula:	C ₁₁ H ₁₆
Molecular Weight:	148.24
Storage:	Powder: -20°C for 3 years In solvent: -80°C for 1 year Actual storage temperature shall be subject to the COA.



Biological Description

Description	Cumene, m-ethyl- is a bioactive chemical.
Targets(IC50)	Others

Preparing Stock Solutions

	1mg	5mg	10mg
1 mM	6.7458 mL	33.7291 mL	67.4582 mL
5 mM	1.3492 mL	6.7458 mL	13.4916 mL
10 mM	0.6746 mL	3.3729 mL	6.7458 mL
50 mM	0.1349 mL	0.6746 mL	1.3492 mL

Please select the appropriate solvent to prepare the stock solution, according to the solubility of the product in different solvents. Please use it as soon as possible.

Note: The dilution table applies only to solid products. For liquid products, please calculate the stock solution based on the stated concentration and/or density.

Inhibitor · Natural Compounds · Compound Libraries · Recombinant Proteins

This product is for Research Use Only · Not for Human or Veterinary or Therapeutic Use

Tel:781-999-4286 E_mail:info@targetmol.com Address:34 Washington Street,Wellesley Hills,MA 02481