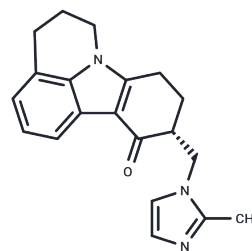


## Cilansetron

## Chemical Properties

CAS No. :	120635-74-7
Formula:	C <sub>20</sub> H <sub>21</sub> N <sub>3</sub> O
Molecular Weight:	319.4
Storage:	Powder: -20°C for 3 years   In solvent: -80°C for 1 year Actual storage temperature shall be subject to the COA.



## Biological Description

Description	Cilansetron is an effective and selective 5-HT <sub>3</sub> receptor antagonist that can be used for related diseases caused by colitis.
Targets(IC50)	5-HT Receptor

## Solubility Information

Solubility	DMSO: 60 mg/mL (187.85 mM), Sonication is recommended. (< 1 mg/ml refers to the product slightly soluble or insoluble)
------------	---

## Preparing Stock Solutions

	1mg	5mg	10mg
1 mM	3.1309 mL	15.6544 mL	31.3087 mL
5 mM	0.6262 mL	3.1309 mL	6.2617 mL
10 mM	0.3131 mL	1.5654 mL	3.1309 mL
50 mM	0.0626 mL	0.3131 mL	0.6262 mL

Please select the appropriate solvent to prepare the stock solution, according to the solubility of the product in different solvents. Please use it as soon as possible.

Note: The dilution table applies only to solid products. For liquid products, please calculate the stock solution based on the stated concentration and/or density.

## Reference

- Chey WD, Cash BD. Cilansetron: a new serotonergic agent for the irritable bowel syndrome with diarrhoea. *Expert Opin Investig Drugs*. 2005 Feb;14(2):185-93.
- Stacher G. Cilansetron in the treatment of diarrhea-predominant irritable bowel syndrome? *Expert Rev Gastroenterol Hepatol*. 2007 Oct;1(1):15-27. doi: 10.1586/17474124.1.1.15. Review. PubMed PMID: 19072430.
- Olden KW, Crowell MD. Cilansetron. *Drugs Today (Barc)*. 2005 Oct;41(10):661-6. Review. PubMed PMID: 16389408.
- Cilansetron: KC 9946. *Drugs R D*. 2005;6(3):169-73. Review. PubMed PMID: 15869320.

**Inhibitor · Natural Compounds · Compound Libraries · Recombinant Proteins**

This product is for Research Use Only · Not for Human or Veterinary or Therapeutic Use

Tel:781-999-4286 E\_mail:info@targetmol.com Address:34 Washington Street,Wellesley Hills,MA 02481