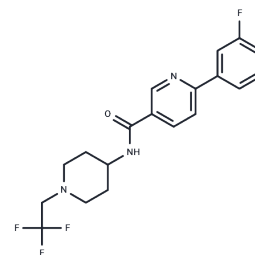


HPGDS inhibitor 1

Chemical Properties

CAS No. :	1033836-12-2
Formula:	C19H19F4N3O
Molecular Weight:	381.37
Storage:	Powder: -20°C for 3 years In solvent: -80°C for 1 year Actual storage temperature shall be subject to the COA.



Biological Description

Description	HPGDS inhibitor 1 is a novel and selective inhibitor for Hematopoietic Prostaglandin D Synthase (HPGDS) with an IC50 Value of 0.7 nM.
Targets(IC50)	PGE Synthase
Kinase Assay	Kinetic characterization of Abl inhibition: The ATP/NADH-coupled assay system in a 96-well format is used to determine the initial velocity of Abl tyrosine kinase catalyzed peptide phosphorylation. The reaction mixture contained 20 mM Tris-HCl, (pH 8.0), 50 mM NaCl, 10 mM MgCl2, 2 mM PEP [2-(Phosphonoxy)- 2-propenoic acid] and 20 µg Abl peptide substrate (EAIYAAPFAKKK), fixed or varied (to determine inhibitor kinetic parameters) concentration of inhibitor applied, 1/50 of the final reaction mixture volume of PK/LDH enzyme (pyruvate kinase/lactic dehydrogenase enzymes from rabbit muscle), 160 µM NADH, 0.16 µM Abl, and ATP added last to start the reaction. Absorbance data are collected every 20s at 340 nm using a SpectraMax M5 Microplate Reader.

Solubility Information

Solubility	DMSO: 55 mg/mL (144.22 mM),Sonication is recommended. (< 1 mg/ml refers to the product slightly soluble or insoluble)
In vivo Formulation	10% DMSO+90% Corn Oil: 2.5 mg/mL (6.56 mM),Sonication is recommended. <i>Please add the solvents sequentially, clarifying the solution as much as possible before adding the next one. Dissolve by heating and/or sonication if necessary. Working solution is recommended to be prepared and used immediately. The formulation provided above is for reference purposes only. In vivo formulations may vary and should be modified based on specific experimental conditions.</i>

Preparing Stock Solutions

	1mg	5mg	10mg
1 mM	2.6221 mL	13.1106 mL	26.2213 mL
5 mM	0.5244 mL	2.6221 mL	5.2443 mL
10 mM	0.2622 mL	1.3111 mL	2.6221 mL
50 mM	0.0524 mL	0.2622 mL	0.5244 mL

Please select the appropriate solvent to prepare the stock solution, according to the solubility of the product in different solvents. Please use it as soon as possible.

Note: The dilution table applies only to solid products. For liquid products, please calculate the stock solution based on the stated concentration and/or density.

Reference

Chris P. Carron, et al. ACS Med. Chem. Lett., 2010, 1 (2), pp 59-63

Inhibitor · Natural Compounds · Compound Libraries · Recombinant Proteins

This product is for Research Use Only · Not for Human or Veterinary or Therapeutic Use

Tel: 781-999-4286 E_mail: info@targetmol.com Address: 34 Washington Street, Wellesley Hills, MA 02481