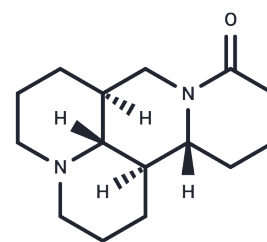


Allomatrine

Chemical Properties

CAS No. :	641-39-4
Formula:	C ₁₅ H ₂₄ N ₂ O
Molecular Weight:	248.36
Storage:	Powder: -20°C for 3 years In solvent: -80°C for 1 year Actual storage temperature shall be subject to the COA.



Biological Description

Description	Lumichrome is an endogenous compound in humans, produced by photodegradation of riboflavin. It utilizes a p53-dependent mechanism to inhibit growth and induce apoptosis in human lung cancer cells.
Targets(IC50)	Others

Solubility Information

Solubility	DMSO: 22.5 mg/mL (90.59 mM), Sonication is recommended. (< 1 mg/ml refers to the product slightly soluble or insoluble)
In vivo Formulation	10% DMSO+40% PEG300+5% Tween 80+45% Saline: 2 mg/mL (8.05 mM), Sonication is recommended. <i>Please add the solvents sequentially, clarifying the solution as much as possible before adding the next one. Dissolve by heating and/or sonication if necessary. Working solution is recommended to be prepared and used immediately. The formulation provided above is for reference purposes only. In vivo formulations may vary and should be modified based on specific experimental conditions.</i>

Preparing Stock Solutions

	1mg	5mg	10mg
1 mM	4.0264 mL	20.1321 mL	40.2641 mL
5 mM	0.8053 mL	4.0264 mL	8.0528 mL
10 mM	0.4026 mL	2.0132 mL	4.0264 mL
50 mM	0.0805 mL	0.4026 mL	0.8053 mL

Please select the appropriate solvent to prepare the stock solution, according to the solubility of the product in different solvents. Please use it as soon as possible.

Note: The dilution table applies only to solid products. For liquid products, please calculate the stock solution based on the stated concentration and/or density.

Reference

Higashiyama K, et al. Implication of the descending dynorphinergic neuron projecting to the spinal cord in the (+)-matrine- and (+)-allomatrine-induced antinociceptive effects. Biol Pharm Bull. 2005 May;28(5):845-8.

Inhibitor · Natural Compounds · Compound Libraries · Recombinant Proteins

This product is for Research Use Only· Not for Human or Veterinary or Therapeutic Use

Tel:781-999-4286 E_mail:info@targetmol.com Address:34 Washington Street,Wellesley Hills,MA 02481