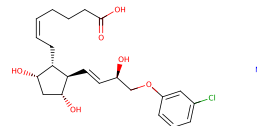


(+)-Cloprostenol sodium

Chemical Properties

CAS No. :	62561-03-9
Formula:	C ₂₂ H ₂₈ ClNaO ₆
Molecular Weight:	446.9
Storage:	Powder: -20°C for 3 years In solvent: -80°C for 1 year Actual storage temperature shall be subject to the COA.



Biological Description

Description	(+) - cloprostenol sodium is a kind of water-soluble prostaglandin F ₂ α (PGF ₂ α) Analogues. It is an FP receptor agonist and a potent luteinizing agent in rats and hamsters.
Targets(IC50)	Others, Prostaglandin Receptor

Preparing Stock Solutions

	1mg	5mg	10mg
1 mM	2.2376 mL	11.1882 mL	22.3764 mL
5 mM	0.4475 mL	2.2376 mL	4.4753 mL
10 mM	0.2238 mL	1.1188 mL	2.2376 mL
50 mM	0.0448 mL	0.2238 mL	0.4475 mL

Please select the appropriate solvent to prepare the stock solution, according to the solubility of the product in different solvents. Please use it as soon as possible.

Note: The dilution table applies only to solid products. For liquid products, please calculate the stock solution based on the stated concentration and/or density.

Reference

Trevisol E, Ferreira JC, Ackermann CL, Destro FC, Marques Filho WC, Carmagos AS, Biehl MV, do Amaral JB, de Figueiredo Pantoja JC, Sartori R, Ferreira JC. Luteal changes after treatment with sub-luteolytic doses of prostaglandin (cloprostenol sodium) in cattle. *Anim Reprod Sci.* 2015 Feb;153:8-12. doi: 10.1016/j.anireprosci.2014.12.005. Epub 2014 Dec 26. PubMed PMID: 25578505.

de Moraes CN, Maia L, de Lima PF, Dias MC, Raposo-Ferreira TM, Sudano MJ, Junior JB, Oba E. Temporal analysis of prostaglandin F2 α receptor, caspase 3, and cyclooxygenase 2 messenger RNA expression and prostaglandin F2 α receptor and cyclooxygenase 2 protein expression in endometrial tissue from multiparous Nelore (*Bos taurus indicus*) cows treated with cloprostenol sodium during puerperium. *Theriogenology.* 2015 Jan 15;83(2):276-84. doi: 10.1016/j.theriogenology.2014.09.022. Epub 2014 Sep 23. PubMed PMID: 25442016.

Pursley JR, Martins JP, Wright C, Stewart ND. Compared to dinoprost tromethamine, cloprostenol sodium increased rates of estrus detection, conception and pregnancy in lactating dairy cows on a large commercial dairy. *Theriogenology.* 2012 Sep 1;78(4):823-9. doi: 10.1016/j.theriogenology.2012.03.032. Epub 2012 May 22. PubMed PMID: 22626771.

Martins JP, Policelli RK, Neuder LM, Raphael W, Pursley JR. Effects of cloprostenol sodium at final prostaglandin F2 α of Ovsynch on complete luteolysis and pregnancy per artificial insemination in lactating dairy cows. *J Dairy Sci.* 2011 Jun;94(6):2815-24. doi: 10.3168/jds.2010-3652. PubMed PMID: 21605751.

Inhibitor · Natural Compounds · Compound Libraries · Recombinant Proteins

This product is for Research Use Only · Not for Human or Veterinary or Therapeutic Use

Tel:781-999-4286 E_mail:info@targetmol.com Address:34 Washington Street,Wellesley Hills,MA 02481