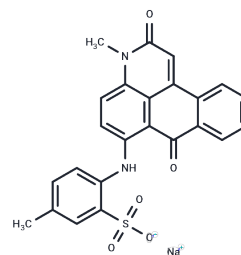


C.I. 68215

## Chemical Properties

CAS No. : 4478-76-6  
 Formula: C<sub>24</sub>H<sub>17</sub>N<sub>2</sub>NaO<sub>5</sub>S  
 Molecular Weight: 468.46  
 Storage: Powder: -20°C for 3 years | In solvent: -80°C for 1 year  
 Actual storage temperature shall be subject to the COA.



## Biological Description

Description	C.I. 68215 is a biochemical.
Targets(IC50)	Others

## Preparing Stock Solutions

	1mg	5mg	10mg
1 mM	2.1347 mL	10.6733 mL	21.3465 mL
5 mM	0.4269 mL	2.1347 mL	4.2693 mL
10 mM	0.2135 mL	1.0673 mL	2.1347 mL
50 mM	0.0427 mL	0.2135 mL	0.4269 mL

Please select the appropriate solvent to prepare the stock solution, according to the solubility of the product in different solvents. Please use it as soon as possible.

Note: The dilution table applies only to solid products. For liquid products, please calculate the stock solution based on the stated concentration and/or density.

Inhibitor · Natural Compounds · Compound Libraries · Recombinant Proteins

This product is for Research Use Only · Not for Human or Veterinary or Therapeutic Use

Tel:781-999-4286 E\_mail:info@targetmol.com Address:34 Washington Street,Wellesley Hills,MA 02481