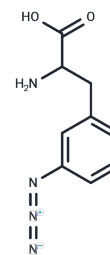


(Rac)-Azide-phenylalanine

Chemical Properties

| | |
|-------------------|---|
| CAS No. : | 1822572-56-4 |
| Formula: | C ₉ H ₁₀ N ₄ O ₂ |
| Molecular Weight: | 206.20 |
| Storage: | Powder: -20°C for 3 years In solvent: -80°C for 1 year Actual storage temperature shall be subject to the COA. |



Biological Description

| | |
|---------------|--|
| Description | (Rac)-Azide-phenylalanine is a racemic form of Azide-phenylalanine, a non-natural amino acid and derivative of phenylalanine. This compound can be site-specifically incorporated into proteins for labeling purposes. |
| Targets(IC50) | Others,Amino Acids and Derivatives |
| In vitro | Azide-phenylalanine is valuable for bioconjugation since proteins embedded with Azide-phenylalanine can undergo direct coupling through the copper (I)-catalyzed azide-alkyne cycloaddition reaction[1]. |

Preparing Stock Solutions

| | 1mg | 5mg | 10mg |
|-------|-----------|------------|------------|
| 1 mM | 4.8497 mL | 24.2483 mL | 48.4966 mL |
| 5 mM | 0.9699 mL | 4.8497 mL | 9.6993 mL |
| 10 mM | 0.485 mL | 2.4248 mL | 4.8497 mL |
| 50 mM | 0.097 mL | 0.485 mL | 0.9699 mL |

Please select the appropriate solvent to prepare the stock solution, according to the solubility of the product in different solvents. Please use it as soon as possible.

Note: The dilution table applies only to solid products. For liquid products, please calculate the stock solution based on the stated concentration and/or density.

Reference

Wang YS, et al. Genetic incorporation of twelve meta-substituted phenylalanine derivatives using a single pyrrolysyl-tRNA synthetase mutant. ACS Chem Biol. 2013 Feb 15;8(2):405-15.

Inhibitor · Natural Compounds · Compound Libraries · Recombinant Proteins

This product is for Research Use Only · Not for Human or Veterinary or Therapeutic Use

Tel:781-999-4286 E_mail:info@targetmol.com Address:34 Washington Street,Wellesley Hills,MA 02481