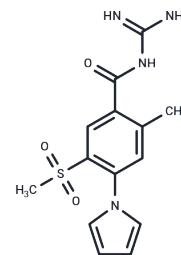


Eniporide

Chemical Properties

| | |
|-------------------|---|
| CAS No. : | 176644-21-6 |
| Formula: | C ₁₄ H ₁₆ N ₄ O ₃ S |
| Molecular Weight: | 320.37 |
| Storage: | Powder: -20°C for 3 years In solvent: -80°C for 1 year Actual storage temperature shall be subject to the COA. |



Biological Description

| | |
|---------------|---|
| Description | Eniporide is a Na(+)/H(+) exchange inhibitor. |
| Targets(IC50) | ATPase |

Solubility Information

| | |
|------------|--|
| Solubility | DMSO: 25 mg/mL (78.03 mM), Sonication is recommended. (< 1 mg/ml refers to the product slightly soluble or insoluble) |
|------------|--|

Preparing Stock Solutions

| | 1mg | 5mg | 10mg |
|-------|-----------|-----------|------------|
| 1 mM | 3.1214 mL | 15.607 mL | 31.2139 mL |
| 5 mM | 0.6243 mL | 3.1214 mL | 6.2428 mL |
| 10 mM | 0.3121 mL | 1.5607 mL | 3.1214 mL |
| 50 mM | 0.0624 mL | 0.3121 mL | 0.6243 mL |

Please select the appropriate solvent to prepare the stock solution, according to the solubility of the product in different solvents. Please use it as soon as possible.

Note: The dilution table applies only to solid products. For liquid products, please calculate the stock solution based on the stated concentration and/or density.

Reference

Zeymer U, et al. J Am Coll Cardiol. 2001 Nov 15;38(6):1644-50.

Inhibitor · Natural Compounds · Compound Libraries · Recombinant Proteins

This product is for Research Use Only · Not for Human or Veterinary or Therapeutic Use

Tel:781-999-4286 E_mail:info@targetmol.com Address:34 Washington Street,Wellesley Hills,MA 02481