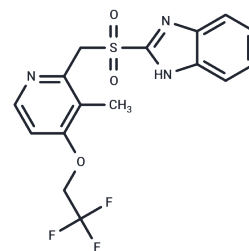


Lansoprazole sulfone

Chemical Properties

CAS No. :	131926-99-3
Formula:	C ₁₆ H ₁₄ F ₃ N ₃ O ₃ S
Molecular Weight:	385.36
Storage:	Powder: -20°C for 3 years In solvent: -80°C for 1 year Actual storage temperature shall be subject to the COA.



Biological Description

Description	Lansoprazole sulfone is a metabolite of the gastric pump inhibitor Lansoprazole.
Targets(IC50)	Others, Proton pump

Solubility Information

Solubility	DMSO: 3.86 mg/mL (10.02 mM), Sonication is recommended. (< 1 mg/ml refers to the product slightly soluble or insoluble)
------------	--

Preparing Stock Solutions

	1mg	5mg	10mg
1 mM	2.595 mL	12.9749 mL	25.9498 mL
5 mM	0.519 mL	2.595 mL	5.190 mL
10 mM	0.2595 mL	1.2975 mL	2.595 mL
50 mM	0.0519 mL	0.2595 mL	0.519 mL

Please select the appropriate solvent to prepare the stock solution, according to the solubility of the product in different solvents. Please use it as soon as possible.

Note: The dilution table applies only to solid products. For liquid products, please calculate the stock solution based on the stated concentration and/or density.

Reference

- Zhang D , Yang M , Liu M , et al. Pharmacokinetics of lansoprazole and its main metabolites after single intravenous doses in healthy Chinese subjects[J]. Xenobiotica, 2012.
- Yanagida Y , Watanabe M , Takeba Y , et al. Potential of lansoprazole as a novel probe for cytochrome P450 3A activity by measuring lansoprazole sulfone in human liver microsomes.[J]. Biological & Pharmaceutical Bulletin, 2009, 32(8):1422-6.

Inhibitor · Natural Compounds · Compound Libraries · Recombinant Proteins

This product is for Research Use Only · Not for Human or Veterinary or Therapeutic Use

Tel:781-999-4286 E_mail:info@targetmol.com Address:34 Washington Street,Wellesley Hills,MA 02481