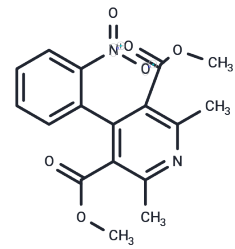


Dehydro Nifedipine

Chemical Properties

CAS No. :	67035-22-7
Formula:	C ₁₇ H ₁₆ N ₂ O ₆
Molecular Weight:	344.32
Storage:	Store at low temperature Powder: -20°C for 3 years In solvent: -80°C for 1 year <small>Actual storage temperature shall be subject to the COA.</small>



Biological Description

Description	Dehydro Nifedipine (BAY-b 4759) is the main metabolite of nifedipine in human plasma. Dehydro Nifedipine inhibits glucose uptake in PC-12 cells with an IC ₅₀ value of 130 μM. Nifedipine is a calcium channel blocker used in the treatment of hypertension and angina. Dehydronifedipine is formed when it is metabolized by cytochrome P450 (CYP) isomers CYP3A4 and CYP3A5.
Targets(IC50)	Drug Metabolite
In vitro	Dehydro nifedipine inhibits glucose uptake in PC-12 cells with an IC ₅₀ value of 130 μM [1].

Solubility Information

Solubility	Ethanol: 2.7 mg/mL (7.84 mM),Sonication is recommended. DMSO: 27 mg/mL (78.42 mM),Sonication is recommended. DMF: 30 mg/mL (87.13 mM),Sonication is recommended. DMSO:PBS (pH 7.2) (1:10): 0.1 mg/mL (0.29 mM),Sonication is recommended. (< 1 mg/ml refers to the product slightly soluble or insoluble)
------------	---

Preparing Stock Solutions

	1mg	5mg	10mg
1 mM	2.9043 mL	14.5214 mL	29.0428 mL
5 mM	0.5809 mL	2.9043 mL	5.8086 mL
10 mM	0.2904 mL	1.4521 mL	2.9043 mL
50 mM	0.0581 mL	0.2904 mL	0.5809 mL

Please select the appropriate solvent to prepare the stock solution, according to the solubility of the product in different solvents. Please use it as soon as possible.

Note: The dilution table applies only to solid products. For liquid products, please calculate the stock solution based on the stated concentration and/or density.

Reference

Shimada T, et al. Evidence for cytochrome P-450NF, the nifedipine oxidase, being the principal enzyme involved in the bioactivation of aflatoxins in human liver. Proc Natl Acad Sci U S A. 1989;86(2):462-465.

Inhibitor · Natural Compounds · Compound Libraries · Recombinant Proteins

This product is for Research Use Only · Not for Human or Veterinary or Therapeutic Use

Tel:781-999-4286 E_mail:info@targetmol.com Address:34 Washington Street,Wellesley Hills,MA 02481