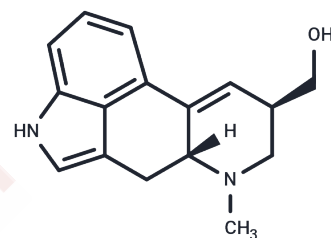


Lysergol

Chemical Properties

| | |
|-------------------|---|
| CAS No. : | 602-85-7 |
| Formula: | C ₁₆ H ₁₈ N ₂ O |
| Molecular Weight: | 254.33 |
| Storage: | Powder: -20°C for 3 years In solvent: -80°C for 1 year Actual storage temperature shall be subject to the COA. |



Biological Description

| | |
|---------------|--|
| Description | Lysergol has been used as a hypotensive, psychotropic analgesic, and uterus- and intestine-stimulating drug. Lysergol is a clavine alkaloid isolated from seeds of Ipomoea muricata and is a bioenhancer for the drugs and nutrients and has antibacterial activity. |
| Targets(IC50) | Antibacterial |

Solubility Information

| | |
|------------|--|
| Solubility | DMSO: 10 mg/mL (39.32 mM), Sonication is recommended. (< 1 mg/ml refers to the product slightly soluble or insoluble) |
|------------|--|

Preparing Stock Solutions

| | 1mg | 5mg | 10mg |
|-------|-----------|------------|-----------|
| 1 mM | 3.9319 mL | 19.6595 mL | 39.319 mL |
| 5 mM | 0.7864 mL | 3.9319 mL | 7.8638 mL |
| 10 mM | 0.3932 mL | 1.9659 mL | 3.9319 mL |
| 50 mM | 0.0786 mL | 0.3932 mL | 0.7864 mL |

Please select the appropriate solvent to prepare the stock solution, according to the solubility of the product in different solvents. Please use it as soon as possible.

Note: The dilution table applies only to solid products. For liquid products, please calculate the stock solution based on the stated concentration and/or density.

Reference

- Maurya A, et al. Antibacterial and synergy of clavine alkaloid lysergol and its derivatives against nalidixic acid-resistant Escherichia coli. Chem Biol Drug Des. 2013 Apr;81(4):484-90.
- Maurya A, et al. Quantitative determination of bioactive alkaloids lysergol and chanoclavine in Ipomoea muricata by reversed-phase high-performance liquid chromatography. Biomed Chromatogr. 2012 Sep;26(9):1096-100.

Inhibitor · Natural Compounds · Compound Libraries · Recombinant Proteins

This product is for Research Use Only · Not for Human or Veterinary or Therapeutic Use

Tel:781-999-4286 E_mail:info@targetmol.com Address:34 Washington Street,Wellesley Hills,MA 02481