

PDdEC-NB

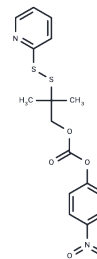
Chemical Properties

CAS No. : 1956318-90-3

Formula: C₁₆H₁₆N₂O₅S₂

Molecular Weight: 380.44

Storage: Keep away from direct sunlight
 Powder: -20°C for 3 years | In solvent: -80°C for 1 year
Actual storage temperature shall be subject to the COA.



Biological Description

Description	PDdEC-NB is a disulfide-cleavable linker used for the antibody-drug conjugate (ADC).
Targets(IC50)	ADC Linker,PROTAC Linker

Preparing Stock Solutions

	1mg	5mg	10mg
1 mM	2.6285 mL	13.1427 mL	26.2854 mL
5 mM	0.5257 mL	2.6285 mL	5.2571 mL
10 mM	0.2629 mL	1.3143 mL	2.6285 mL
50 mM	0.0526 mL	0.2629 mL	0.5257 mL

Please select the appropriate solvent to prepare the stock solution, according to the solubility of the product in different solvents. Please use it as soon as possible.

Note: The dilution table applies only to solid products. For liquid products, please calculate the stock solution based on the stated concentration and/or density.

Reference

Flygare, John, et al. Anthracycline disulfide intermediates, antibody-drug conjugates and methods.WO 2016040825 A1 20160317.

Inhibitor · Natural Compounds · Compound Libraries · Recombinant Proteins

This product is for Research Use Only · Not for Human or Veterinary or Therapeutic Use

Tel:781-999-4286 E_mail:info@targetmol.com Address:34 Washington Street,Wellesley Hills,MA 02481