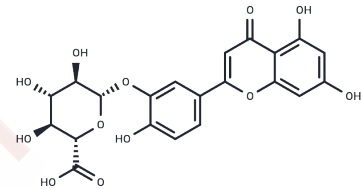


Luteolin-3-O-beta-D-glucuronide

Chemical Properties

CAS No. :	53527-42-7
Formula:	C ₂₁ H ₁₈ O ₁₂
Molecular Weight:	462.36
Storage:	Powder: -20°C for 3 years In solvent: -80°C for 1 year Actual storage temperature shall be subject to the COA.



Biological Description

Description	Luteolin-3-O-beta-D-glucuronide effectively inhibits nitrite production in macrophages.
Targets(IC50)	Others, Drug Metabolite

Solubility Information

Solubility	DMSO: 4.63 mg/mL (10.01 mM), Sonication is recommended. (< 1 mg/ml refers to the product slightly soluble or insoluble)
In vivo Formulation	10% DMSO+40% PEG300+5% Tween 80+45% Saline: 1 mg/mL (2.16 mM), Sonication is recommended. <i>Please add the solvents sequentially, clarifying the solution as much as possible before adding the next one. Dissolve by heating and/or sonication if necessary. Working solution is recommended to be prepared and used immediately. The formulation provided above is for reference purposes only. In vivo formulations may vary and should be modified based on specific experimental conditions.</i>

Preparing Stock Solutions

	1mg	5mg	10mg
1 mM	2.1628 mL	10.8141 mL	21.6282 mL
5 mM	0.4326 mL	2.1628 mL	4.3256 mL
10 mM	0.2163 mL	1.0814 mL	2.1628 mL
50 mM	0.0433 mL	0.2163 mL	0.4326 mL

Please select the appropriate solvent to prepare the stock solution, according to the solubility of the product in different solvents. Please use it as soon as possible.

Note: The dilution table applies only to solid products. For liquid products, please calculate the stock solution based on the stated concentration and/or density.

Reference

del Baño MJ, et al. Flavonoid distribution during the development of leaves, flowers, stems, and roots of *Rosmarinus officinalis*. postulation of a biosynthetic pathway. *J Agric Food Chem*. 2004 Aug 11;52(16):4987-92.

Inhibitor · Natural Compounds · Compound Libraries · Recombinant Proteins

This product is for Research Use Only· Not for Human or Veterinary or Therapeutic Use

Tel:781-999-4286 E_mail:info@targetmol.com Address:34 Washington Street,Wellesley Hills,MA 02481