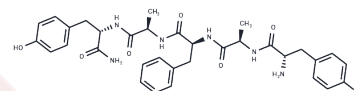


Casokefamide

Chemical Properties

CAS No. :	98815-38-4
Formula:	C ₃₃ H ₄₀ N ₆ O ₇
Molecular Weight:	632.71
Storage:	Powder: -20°C for 3 years In solvent: -80°C for 1 year Actual storage temperature shall be subject to the COA.



Biological Description

Description	Casokefamide is a peripherally-specific, synthetic opioid pentapeptide. It was derived from the β -casomorphin sequence and designed with the intention of improving resistance to digestive enzymes so that it could be used as an antidiarrheal medicine.
Targets(IC50)	Others

Preparing Stock Solutions

	1mg	5mg	10mg
1 mM	1.5805 mL	7.9025 mL	15.805 mL
5 mM	0.3161 mL	1.5805 mL	3.161 mL
10 mM	0.1581 mL	0.7903 mL	1.5805 mL
50 mM	0.0316 mL	0.1581 mL	0.3161 mL

Please select the appropriate solvent to prepare the stock solution, according to the solubility of the product in different solvents. Please use it as soon as possible.

Note: The dilution table applies only to solid products. For liquid products, please calculate the stock solution based on the stated concentration and/or density.

Reference

- Schulte-Frohlinde E, Reindl W, Bierling D, Lersch C, Brantl V, Teschemacher H, Schusdziarra V. Effects of oral casokefamide on plasma levels, tolerance, and intestinal transit in man. *Peptides*. 2000 Mar;21(3):439-42. PubMed PMID: 10793229.
- Brantl V, Picone D, Amodeo P, Temussi PA. Solution structure of casokefamide. *Biochem Biophys Res Commun*. 1993 Mar 31;191(3):853-9. PubMed PMID: 8466524.
- Fuglsang A, Nilsson D, Nyborg NC. Using spectrophotometry to determine in vitro turnover rates of peptides in plasma. *J Biochem Biophys Methods*. 2004 Feb 27;58(2):139-51. PubMed PMID: 14980787.
- Allescher HD, Storr M, Piller C, Brantl V, Schusdziarra V. Effect of opioid active therapeutics on the ascending reflex pathway in the rat ileum. *Neuropeptides*. 2000 Jun-Aug;34(3-4):181-6. PubMed PMID: 11021978.

Inhibitor · Natural Compounds · Compound Libraries · Recombinant Proteins

This product is for Research Use Only · Not for Human or Veterinary or Therapeutic Use

Tel:781-999-4286 E_mail:info@targetmol.com Address:34 Washington Street,Wellesley Hills,MA 02481