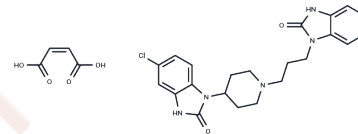


Domperidone monomaleate

Chemical Properties

CAS No. :	83898-65-1
Formula:	C ₂₆ H ₂₈ ClN ₅ O ₆
Molecular Weight:	541.98
Storage:	Powder: -20°C for 3 years In solvent: -80°C for 1 year Actual storage temperature shall be subject to the COA.



Biological Description

Description	Domperidone (R33812) monomaleate is a selective, orally active dopamine-2 receptor antagonist that affects the chemoreceptor trigger zone and motor function in the stomach and small intestine, and has antiemetic and prokinetic effects. Domperidone monomaleate is an antiemetic and prokinetic agent.
Targets(IC50)	Others,Dopamine Receptor

Preparing Stock Solutions

	1mg	5mg	10mg
1 mM	1.8451 mL	9.2254 mL	18.4509 mL
5 mM	0.369 mL	1.8451 mL	3.6902 mL
10 mM	0.1845 mL	0.9225 mL	1.8451 mL
50 mM	0.0369 mL	0.1845 mL	0.369 mL

Please select the appropriate solvent to prepare the stock solution, according to the solubility of the product in different solvents. Please use it as soon as possible.

Note: The dilution table applies only to solid products. For liquid products, please calculate the stock solution based on the stated concentration and/or density.

Inhibitor · Natural Compounds · Compound Libraries · Recombinant Proteins

This product is for Research Use Only · Not for Human or Veterinary or Therapeutic Use

Tel:781-999-4286 E_mail:info@targetmol.com Address:34 Washington Street,Wellesley Hills,MA 02481