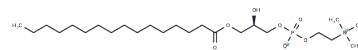


## 1-Palmitoyl-sn-glycero-3-phosphocholine

### Chemical Properties

CAS No. :	17364-16-8
Formula:	C <sub>24</sub> H <sub>50</sub> N <sub>0</sub> O <sub>7</sub> P
Molecular Weight:	495.63
Storage:	Powder: -20°C for 3 years   In solvent: -80°C for 1 year Actual storage temperature shall be subject to the COA.



### Biological Description

Description	1-Palmitoyl-sn-glycero-3-phosphocholine (16:0 Lyso PC) is a pro-inflammatory lysophosphatidylcholine that can be used in atherosclerosis research.
Targets(IC50)	Others,Endogenous Metabolite
In vitro	Kinetic experiments showed that the apparent Km value of 1-Palmitoyl-sn-glycero-3-phosphocholine was 6.0 μM. [1]

### Solubility Information

Solubility	H <sub>2</sub> O: 40.83 mg/mL (82.38 mM),Sonication is recommended. DMSO: Insoluble, (< 1 mg/ml refers to the product slightly soluble or insoluble)
------------	--

### Preparing Stock Solutions

	1mg	5mg	10mg
1 mM	2.0176 mL	10.0882 mL	20.1763 mL
5 mM	0.4035 mL	2.0176 mL	4.0353 mL
10 mM	0.2018 mL	1.0088 mL	2.0176 mL
50 mM	0.0404 mL	0.2018 mL	0.4035 mL

Please select the appropriate solvent to prepare the stock solution, according to the solubility of the product in different solvents. Please use it as soon as possible.

Note: The dilution table applies only to solid products. For liquid products, please calculate the stock solution based on the stated concentration and/or density.

Reference

- Qin X, et al. Lysophosphatidylcholine perpetuates macrophage polarization toward classically activated phenotype in inflammation. *Cell Immunol.* 2014 May-Jun;289(1-2):185-90. doi: 10.1016/j.cellimm.2014.04.010. Epub 2014 May 2. PMID: 24841857.
- Yamauchi K, et al. Synthesis and properties of dimeric glycerophospholipid: 2,2'-dotriacontanedioylbis(1-palmitoyl-sn-glycero-3-phosphocholine). *J Biochem.* 1996 Jan;119(1):115-9.

**Inhibitor · Natural Compounds · Compound Libraries · Recombinant Proteins**

This product is for Research Use Only · Not for Human or Veterinary or Therapeutic Use

Tel:781-999-4286 E\_mail:info@targetmol.com Address:34 Washington Street,Wellesley Hills,MA 02481