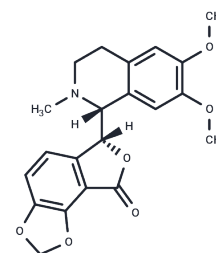


## (-)-Adlumine

## Chemical Properties

CAS No. :	21414-43-7
Formula:	C <sub>21</sub> H <sub>21</sub> N <sub>0</sub> O <sub>6</sub>
Molecular Weight:	383.39
Storage:	Powder: -20°C for 3 years   In solvent: -80°C for 1 year Actual storage temperature shall be subject to the COA.



## Biological Description

Description	(-)-Adlumine is a bioactive chemical.
Targets(IC50)	Others

## Preparing Stock Solutions

	1mg	5mg	10mg
1 mM	2.6083 mL	13.0416 mL	26.0831 mL
5 mM	0.5217 mL	2.6083 mL	5.2166 mL
10 mM	0.2608 mL	1.3042 mL	2.6083 mL
50 mM	0.0522 mL	0.2608 mL	0.5217 mL

Please select the appropriate solvent to prepare the stock solution, according to the solubility of the product in different solvents. Please use it as soon as possible.

Note: The dilution table applies only to solid products. For liquid products, please calculate the stock solution based on the stated concentration and/or density.

## Reference

- Watanabe S, Kanatsu-Shinohara M, Ogonuki N, Matoba S, Ogura A, Shinohara T. In Vivo Genetic Manipulation of Spermatogonial Stem Cells and Their Microenvironment by Adeno-Associated Viruses. *Stem Cell Reports*. 2018 May 8;10(5):1551-1564. doi: 10.1016/j.stemcr.2018.03.005. Epub 2018 Apr 5. PubMed PMID: 29628393.
- Diani SDS. A new model for chronic diseases. *Med Hypotheses*. 2018 Apr;113:30-39. doi: 10.1016/j.mehy.2018.02.011. Epub 2018 Feb 15. PubMed PMID: 29523289.
- Sharma S, Hanukoglu A, Hanukoglu I. Localization of epithelial sodium channel (ENaC) and CFTR in the germinal epithelium of the testis, Sertoli cells, and spermatozoa. *J Mol Histol*. 2018 Apr;49(2):195-208. doi: 10.1007/s10735-018-9759-2. Epub 2018 Feb 16. PubMed PMID: 29453757.
- Chen H, Lui WY, Mruk DD, Xiao X, Ge R, Lian Q, Lee WM, Silvestrini B, Cheng CY. Monitoring the Integrity of the Blood-Testis Barrier (BTB): An In Vivo Assay. *Methods Mol Biol*. 2018;1748:245-252. doi: 10.1007/978-1-4939-7698-0\_17. PubMed PMID: 29453576.

**Inhibitor · Natural Compounds · Compound Libraries · Recombinant Proteins**

This product is for Research Use Only · Not for Human or Veterinary or Therapeutic Use

Tel:781-999-4286 E\_mail:info@targetmol.com Address:34 Washington Street,Wellesley Hills,MA 02481