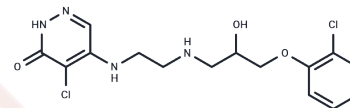


Ridazolol

Chemical Properties

CAS No. :	83395-21-5
Formula:	C ₁₅ H ₁₈ Cl ₂ N ₄ O ₃
Molecular Weight:	373.23
Storage:	Powder: -20°C for 3 years In solvent: -80°C for 1 year Actual storage temperature shall be subject to the COA.



Biological Description

Description	Ridazolol is a vasodilating and cardioselective beta adrenergic blocker.
Targets(IC50)	Others,Adrenergic Receptor

Preparing Stock Solutions

	1mg	5mg	10mg
1 mM	2.6793 mL	13.3966 mL	26.7931 mL
5 mM	0.5359 mL	2.6793 mL	5.3586 mL
10 mM	0.2679 mL	1.3397 mL	2.6793 mL
50 mM	0.0536 mL	0.2679 mL	0.5359 mL

Please select the appropriate solvent to prepare the stock solution, according to the solubility of the product in different solvents. Please use it as soon as possible.

Note: The dilution table applies only to solid products. For liquid products, please calculate the stock solution based on the stated concentration and/or density.

Reference

- Unger P, Berkenboom G, Fontaine J. Study of ridazolol on isolated canine and human coronary arteries. Cardiovasc Drugs Ther. 1989 Jun;3(3):459-64. PubMed PMID: 2577285.
- Fach WA, Starke E, Becker HJ. [Duration of the effect and dose-response relationship of ridazolol in patients with coronary heart disease]. Z Kardiol. 1992 Jun;81(6):320-5. German. PubMed PMID: 1353933.
- Haerer W, Henze E, Stauch M. [The effect of a combination of ridazolol and molsidomine on hemodynamics and left ventricular function in dilated cardiomyopathy]. Arzneimittelforschung. 1989 Jun;39(6):714-6. German. PubMed PMID: 2570582.
- Rommel T, Demisch L. Influence of chronic beta-adrenoreceptor blocker treatment on melatonin secretion and sleep quality in patients with essential hypertension. J Neural Transm Gen Sect. 1994;95(1):39-48. PubMed PMID: 7857585.

Inhibitor · Natural Compounds · Compound Libraries · Recombinant Proteins

This product is for Research Use Only · Not for Human or Veterinary or Therapeutic Use

Tel:781-999-4286 E_mail:info@targetmol.com Address:34 Washington Street,Wellesley Hills,MA 02481