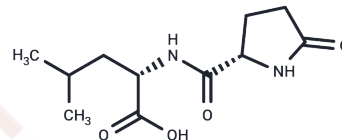


Pyroglutamylleucine

Chemical Properties

CAS No. : 21282-11-1
 Formula: C₁₁H₁₈N₂O₄
 Molecular Weight: 242.2716
 Storage: Powder: -20°C for 3 years | In solvent: -80°C for 1 year
 Actual storage temperature shall be subject to the COA.



Biological Description

Description	Pyroglutamylleucine is a peptide from wheat gluten hydrolysate which suppresses the induction of inducible nitric oxide synthase in interleukin-1 β -stimulated primary cultured rat hepatocytes.
Targets(IC50)	Others

Preparing Stock Solutions

	1mg	5mg	10mg
1 mM	4.1276 mL	20.6381 mL	41.2763 mL
5 mM	0.8255 mL	4.1276 mL	8.2553 mL
10 mM	0.4128 mL	2.0638 mL	4.1276 mL
50 mM	0.0826 mL	0.4128 mL	0.8255 mL

Please select the appropriate solvent to prepare the stock solution, according to the solubility of the product in different solvents. Please use it as soon as possible.

Note: The dilution table applies only to solid products. For liquid products, please calculate the stock solution based on the stated concentration and/or density.

Reference

Yamamoto Y, Mizushige T, Mori Y, Shimmura Y, Fukutomi R, Kanamoto R, Ohinata K. Antidepressant-like effect of food-derived pyroglutamyl peptides in mice. *Neuropeptides*. 2015 Jun;51:25-9. doi: 10.1016/j.npep.2015.04.002. Epub 2015 Apr 22. PubMed PMID: 25957094.

Oishi M, Kiyono T, Sato K, Tokuhara K, Tanaka Y, Miki H, Nakatake R, Kaibori M, Nishizawa M, Okumura T, Kon M. pyroGlu-Leu inhibits the induction of inducible nitric oxide synthase in interleukin-1 β -stimulated primary cultured rat hepatocytes. *Nitric Oxide*. 2015 Jan 30;44:81-7. doi: 10.1016/j.niox.2014.12.005. Epub 2014 Dec 12. PubMed PMID: 25512333.

Hirai S, Horii S, Matsuzaki Y, Ono S, Shimmura Y, Sato K, Egashira Y. Anti-inflammatory effect of pyroglutamyl-leucine on lipopolysaccharide-stimulated RAW 264.7 macrophages. *Life Sci*. 2014 Nov 4;117(1):1-6. doi: 10.1016/j.lfs.2014.08.017. Epub 2014 Sep 16. PubMed PMID: 25225121.

Kiyono T, Hirooka K, Yamamoto Y, Kuniishi S, Ohtsuka M, Kimura S, Park EY, Nakamura Y, Sato K. Identification of pyroglutamyl peptides in Japanese rice wine (sake): presence of hepatoprotective pyroGlu-Leu. *J Agric Food Chem*. 2013 Nov 27;61(47):11660-7. doi: 10.1021/jf404381w. Epub 2013 Nov 14. PubMed PMID: 24175632.

Inhibitor · Natural Compounds · Compound Libraries · Recombinant Proteins

This product is for Research Use Only · Not for Human or Veterinary or Therapeutic Use

Tel:781-999-4286 E_mail:info@targetmol.com Address:34 Washington Street,Wellesley Hills,MA 02481