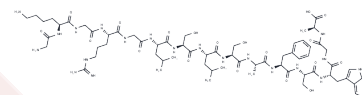


[Ala113]MBP(104-118)

## Chemical Properties

CAS No. :	99026-78-5
Formula:	C67H104N20O19
Molecular Weight:	1493.68
Storage:	Keep away from moisture Powder: -20°C for 3 years   In solvent: -80°C for 1 year <small>Actual storage temperature shall be subject to the COA.</small>



## Biological Description

Description	Synthetic peptide analog of bovine myelin basic protein (MBP). Non-competitive inhibitor of PKC (IC50 = 28 - 62 mM).
Targets(IC50)	PKC

## Solubility Information

Solubility	0.25% acetic acid: 2 mg/mL (1.34 mM), Sonication is recommended. (< 1 mg/ml refers to the product slightly soluble or insoluble)
------------	---

## Preparing Stock Solutions

	1mg	5mg	10mg
1 mM	0.6695 mL	3.3474 mL	6.6949 mL
5 mM	0.1339 mL	0.6695 mL	1.339 mL
10 mM	0.0669 mL	0.3347 mL	0.6695 mL
50 mM	0.0134 mL	0.0669 mL	0.1339 mL

Please select the appropriate solvent to prepare the stock solution, according to the solubility of the product in different solvents. Please use it as soon as possible.

Note: The dilution table applies only to solid products. For liquid products, please calculate the stock solution based on the stated concentration and/or density.

## Reference

Su et al (1986) Synthetic myelin basic protein peptide analogs are specific inhibitors of phospholipid/calcium-dependent protein kinase (protein kinase C). Biochem.Biophys.Res.Commun. 134 78 PMID:

Turner et al (1985) Substrate specificity of phospholipid/Ca<sup>2+</sup> dependent protein kinase as probed with synthetic peptide fragments of the bovine myelin basic protein. J.Biol.Chem. 260 11503 PMID:

**Inhibitor · Natural Compounds · Compound Libraries · Recombinant Proteins**

This product is for Research Use Only · Not for Human or Veterinary or Therapeutic Use

Tel:781-999-4286 E\_mail:info@targetmol.com Address:34 Washington Street,Wellesley Hills,MA 02481