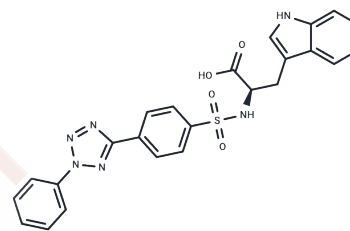


MMI-166

Chemical Properties

CAS No. : 193809-84-6
 Formula: C₂₄H₂₀N₆O₄S
 Molecular Weight: 488.52
 Storage: Powder: -20°C for 3 years | In solvent: -80°C for 1 year
 Actual storage temperature shall be subject to the COA.



Biological Description

Description	MMI-166 is a selective matrix metalloproteinase (MMP) inhibitor that prevents tumor invasion and metastasis by downregulating the activity of MMP-2 and MMP-9.
Targets(IC50)	Others

Preparing Stock Solutions

	1mg	5mg	10mg
1 mM	2.047 mL	10.235 mL	20.470 mL
5 mM	0.4094 mL	2.047 mL	4.094 mL
10 mM	0.2047 mL	1.0235 mL	2.047 mL
50 mM	0.0409 mL	0.2047 mL	0.4094 mL

Please select the appropriate solvent to prepare the stock solution, according to the solubility of the product in different solvents. Please use it as soon as possible.

Note: The dilution table applies only to solid products. For liquid products, please calculate the stock solution based on the stated concentration and/or density.

Inhibitor · Natural Compounds · Compound Libraries · Recombinant Proteins

This product is for Research Use Only · Not for Human or Veterinary or Therapeutic Use

Tel: 781-999-4286 E_mail: info@targetmol.com Address: 34 Washington Street, Wellesley Hills, MA 02481