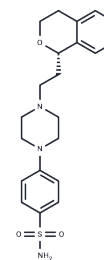


Sonpiprazole

Chemical Properties

| | |
|-------------------|---|
| CAS No. : | 170858-33-0 |
| Formula: | C ₂₁ H ₂₇ N ₃ O ₃ S |
| Molecular Weight: | 401.52 |
| Storage: | Powder: -20°C for 3 years In solvent: -80°C for 1 year Actual storage temperature shall be subject to the COA. |



Biological Description

| | |
|---------------|---|
| Description | Sonpiprazole (PNU-101387G) is a chemical compound known for its selective antagonistic properties toward D4 dopamine receptors, exhibiting dissociation constants (K _i s) of 3.6 nM and 10.1 nM for rat D4 (rD4) and human D4.2 (hD4.2) dopamine receptors, respectively; it shows significantly less affinity for rat D2 (rD2) dopamine and Histamine-H1 receptors, with K _i s of 5147 nM and 7430 nM, respectively. |
| Targets(IC50) | Dopamine Receptor |

Solubility Information

| | |
|---------------------|---|
| Solubility | DMSO: 60 mg/mL (149.43 mM), Sonication is recommended. (< 1 mg/ml refers to the product slightly soluble or insoluble) |
| In vivo Formulation | 10% DMSO+40% PEG300+5% Tween 80+45% Saline: 2 mg/mL (4.98 mM), Sonication is recommended. <i>Please add the solvents sequentially, clarifying the solution as much as possible before adding the next one. Dissolve by heating and/or sonication if necessary. Working solution is recommended to be prepared and used immediately. The formulation provided above is for reference purposes only. In vivo formulations may vary and should be modified based on specific experimental conditions.</i> |

Preparing Stock Solutions

| | 1mg | 5mg | 10mg |
|-------|------------|------------|-------------|
| 1 mM | 2.4905 mL | 12.4527 mL | 24.9054 mL |
| 5 mM | 0.4981 mL | 2.4905 mL | 4.9811 mL |
| 10 mM | 0.2491 mL | 1.2453 mL | 2.4905 mL |
| 50 mM | 0.0498 mL | 0.2491 mL | 0.4981 mL |

Please select the appropriate solvent to prepare the stock solution, according to the solubility of the product in different solvents. Please use it as soon as possible.

Note: The dilution table applies only to solid products. For liquid products, please calculate the stock solution based on the stated concentration and/or density.

Inhibitor · Natural Compounds · Compound Libraries · Recombinant Proteins

This product is for Research Use Only · Not for Human or Veterinary or Therapeutic Use

Tel:781-999-4286 E_mail:info@targetmol.com Address:34 Washington Street,Wellesley Hills,MA 02481