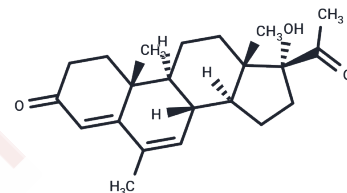


## Megestrol

## Chemical Properties

CAS No. :	3562-63-8
Formula:	C <sub>22</sub> H <sub>30</sub> O <sub>3</sub>
Molecular Weight:	342.48
Storage:	Store at low temperature Powder: -20°C for 3 years   In solvent: -80°C for 1 year <small>Actual storage temperature shall be subject to the COA.</small>



## Biological Description

Description	Megestrol is a synthetic progestin exhibiting androgenic, corticosteroid, and progestational properties. It stimulates appetite and is indicated for anorexia and weight loss in patients with acquired immunodeficiency syndrome (AIDS).
Targets(IC50)	Others

## Solubility Information

Solubility	DMSO: 55 mg/mL (160.59 mM), Sonication is recommended. (< 1 mg/ml refers to the product slightly soluble or insoluble)
------------	---

## Preparing Stock Solutions

	1mg	5mg	10mg
1 mM	2.9199 mL	14.5994 mL	29.1988 mL
5 mM	0.584 mL	2.9199 mL	5.8398 mL
10 mM	0.292 mL	1.4599 mL	2.9199 mL
50 mM	0.0584 mL	0.292 mL	0.584 mL

Please select the appropriate solvent to prepare the stock solution, according to the solubility of the product in different solvents. Please use it as soon as possible.

Note: The dilution table applies only to solid products. For liquid products, please calculate the stock solution based on the stated concentration and/or density.

### Reference

- Sharifzadeh F, et al. A comparison between the effects of metformin and megestrol on simple endometrial hyperplasia. *Gynecol Endocrinol*. 2017;33(2):152-155.
- Stiles J, Coster M. Use of an ophthalmic formulation of megestrol acetate for the treatment of eosinophilic keratitis in cats. *Vet Ophthalmol*. 2016;19 Suppl 1:86-90.
- Nanjappa S, Thai C, Shah S, Snyder M. Pharmacy Report: Megestrol Acetate-Induced Adrenal Insufficiency. *Cancer Control*. 2016;23(2):167-169.
- Guk J, et al. Quantitative Assessment of Food Effect on the Pharmacokinetics of Nano-Crystallized Megestrol Acetate. *Basic Clin Pharmacol Toxicol*. 2017;120(3):270-277.

**Inhibitor · Natural Compounds · Compound Libraries · Recombinant Proteins**

This product is for Research Use Only · Not for Human or Veterinary or Therapeutic Use

Tel:781-999-4286 E\_mail:info@targetmol.com Address:34 Washington Street,Wellesley Hills,MA 02481