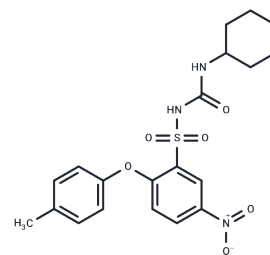


TP α / β antagonist-1

Chemical Properties

CAS No. :	899789-84-5
Formula:	C ₂₀ H ₂₃ N ₃ O ₆ S
Molecular Weight:	433.48
Storage:	Powder: -20°C for 3 years In solvent: -80°C for 1 year Actual storage temperature shall be subject to the COA.



Biological Description

Description	TP α / β antagonist-1 is a selective, dual thromboxane A ₂ receptor (TP receptor) antagonist that simultaneously targets both the TP α and TP β subtypes, with IC ₅₀ values of 1.52 nM and 0.79 nM, respectively. TP α / β antagonist-1 inhibits platelet aggregation. TP α / β antagonist-1 can be used in research on cardiovascular diseases.
Targets(IC ₅₀)	Prostaglandin Receptor
In vitro	TP α / β antagonist-1 binds to both TP α and TP β receptors, with a higher affinity for TP β (IC ₅₀ for TP α = 1.52 nM, IC ₅₀ for TP β = 0.79 nM). [1] TP α / β antagonist-1 antagonizes U-46619-mediated calcium mobilization and exhibits greater potency against TP β (IC ₅₀ for TP α is 600.71 nM, IC ₅₀ for TP β is 70.15 nM).[1]

Preparing Stock Solutions

	1mg	5mg	10mg
1 mM	2.3069 mL	11.5346 mL	23.0691 mL
5 mM	0.4614 mL	2.3069 mL	4.6138 mL
10 mM	0.2307 mL	1.1535 mL	2.3069 mL
50 mM	0.0461 mL	0.2307 mL	0.4614 mL

Please select the appropriate solvent to prepare the stock solution, according to the solubility of the product in different solvents. Please use it as soon as possible.

Note: The dilution table applies only to solid products. For liquid products, please calculate the stock solution based on the stated concentration and/or density.

Reference

Hanson J, et al. Synthesis and pharmacological evaluation of novel nitrobenzenic thromboxane modulators as antiplatelet agents acting on both the alpha and beta isoforms of the human thromboxane receptor. J Med Chem. 2006;49(12):3701-3709.

Inhibitor · Natural Compounds · Compound Libraries · Recombinant Proteins

This product is for Research Use Only · Not for Human or Veterinary or Therapeutic Use

Tel:781-999-4286 E_mail:info@targetmol.com Address:34 Washington Street,Wellesley Hills,MA 02481