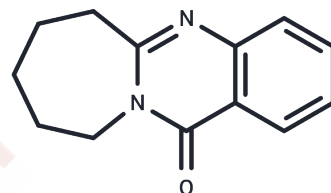


RLX

## Chemical Properties

CAS No. : 4425-23-4  
 Formula: C<sub>13</sub>H<sub>14</sub>N<sub>2</sub>O  
 Molecular Weight: 214.26  
 Storage: Powder: -20°C for 3 years | In solvent: -80°C for 1 year  
 Actual storage temperature shall be subject to the COA.



## Biological Description

Description	RLX (PD 139530) is a PI3K/Akt/FoxO3a signal inhibitor with anticancer activity against tumour cell lines such as colon cancer, inducing sub-G1 arrest and mitochondrial potential loss, thereby inhibiting tumour growth. RLX also exhibits antitussive and anti-asthmatic activity, reducing eosinophils and total lymphocytes in bronchoalveolar lavage (BAL) fluid, and exhibits toxicity toward A549 cells.
Targets(IC50)	Others,Akt,FOXO,PI3K

## Preparing Stock Solutions

	1mg	5mg	10mg
1 mM	4.6672 mL	23.3361 mL	46.6723 mL
5 mM	0.9334 mL	4.6672 mL	9.3345 mL
10 mM	0.4667 mL	2.3336 mL	4.6672 mL
50 mM	0.0933 mL	0.4667 mL	0.9334 mL

Please select the appropriate solvent to prepare the stock solution, according to the solubility of the product in different solvents. Please use it as soon as possible.

Note: The dilution table applies only to solid products. For liquid products, please calculate the stock solution based on the stated concentration and/or density.

## Reference

- Garella R, et al. Site-related Effects of Relaxin in the Gastrointestinal Tract Through Nitric Oxide Signalling: An Updated Report. *Curr Protein Pept Sci.* 2017;18(12):1254-1262.
- Lienart V, et al. Effect of preventive hormonal therapy on breast density: a systematic qualitative review. *ScientificWorldJournal.* 2014;2014:942386.
- Lin T, et al. Alendronate versus Raloxifene for Postmenopausal Women: A Meta-Analysis of Seven Head-to-Head Randomized Controlled Trials. *Int J Endocrinol.* 2014;2014:796510.
- Mirkin S, et al. Tissue-selective estrogen complexes for postmenopausal women. *Maturitas.* 2013 Nov;76(3):213-20.

**Inhibitor · Natural Compounds · Compound Libraries · Recombinant Proteins**

This product is for Research Use Only · Not for Human or Veterinary or Therapeutic Use

Tel:781-999-4286 E\_mail:info@targetmol.com Address:34 Washington Street,Wellesley Hills,MA 02481