

(6E)-1-(2,6-dihydroxyphenyl)tetradec-6-en-1-one

Chemical Properties

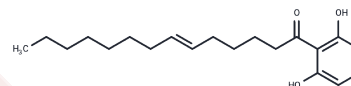
CAS No. :

Formula: C₂₀H₃₀O₃

Molecular Weight: 318.46

Storage: Powder: -20°C for 3 years | In solvent: -80°C for 1 year

Actual storage temperature shall be subject to the COA.



Biological Description

Description

(6E)-1-(2,6-dihydroxyphenyl)tetradec-6-en-1-one is a high-purity biochemical reagent suitable for biochemical experiments and drug synthesis research.

Preparing Stock Solutions

	1mg	5mg	10mg
1 mM	3.1401 mL	15.7006 mL	31.4011 mL
5 mM	0.628 mL	3.1401 mL	6.2802 mL
10 mM	0.314 mL	1.5701 mL	3.1401 mL
50 mM	0.0628 mL	0.314 mL	0.628 mL

Please select the appropriate solvent to prepare the stock solution, according to the solubility of the product in different solvents. Please use it as soon as possible.

Note: The dilution table applies only to solid products. For liquid products, please calculate the stock solution based on the stated concentration and/or density.

Inhibitor · Natural Compounds · Compound Libraries · Recombinant Proteins

This product is for Research Use Only · Not for Human or Veterinary or Therapeutic Use

Tel:781-999-4286

E_mail:info@targetmol.com

Address:34 Washington Street,Wellesley Hills,MA 02481