

## 2-methyl-5-(6-methylhept-5-en-2-yl)cyclohex-3-ene-1,2-diol

### Chemical Properties

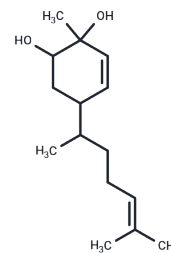
CAS No. :

Formula: C<sub>15</sub>H<sub>26</sub>O<sub>2</sub>

Molecular Weight: 238.37

Storage: Powder: -20°C for 3 years | In solvent: -80°C for 1 year

Actual storage temperature shall be subject to the COA.



### Biological Description

Description	2-methyl-5-(6-methylhept-5-en-2-yl)cyclohex-3-ene-1,2-diol is a high-purity biochemical reagent suitable for biochemical experiments and drug synthesis research.
-------------	---

### Preparing Stock Solutions

	1mg	5mg	10mg
1 mM	4.1952 mL	20.9758 mL	41.9516 mL
5 mM	0.839 mL	4.1952 mL	8.3903 mL
10 mM	0.4195 mL	2.0976 mL	4.1952 mL
50 mM	0.0839 mL	0.4195 mL	0.839 mL

Please select the appropriate solvent to prepare the stock solution, according to the solubility of the product in different solvents. Please use it as soon as possible.

Note: The dilution table applies only to solid products. For liquid products, please calculate the stock solution based on the stated concentration and/or density.

**Inhibitor · Natural Compounds · Compound Libraries · Recombinant Proteins**

This product is for Research Use Only · Not for Human or Veterinary or Therapeutic Use

Tel:781-999-4286 E\_mail:info@targetmol.com Address:34 Washington Street,Wellesley Hills,MA 02481