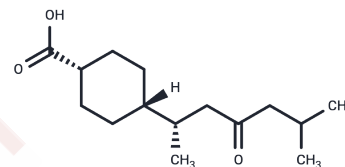


cis-Dihydroepitodomatuic acid

Chemical Properties

CAS No. : 125072-75-5
 Formula: C₁₅H₂₆O₃
 Molecular Weight: 254.37
 Storage: Powder: -20°C for 3 years | In solvent: -80°C for 1 year
Actual storage temperature shall be subject to the COA.



Biological Description

Description	cis-Dihydroepitodomatuic acid is a high-purity biochemical reagent suitable for biochemical experiments and drug synthesis research.
-------------	--

Preparing Stock Solutions

	1mg	5mg	10mg
1 mM	3.9313 mL	19.6564 mL	39.3128 mL
5 mM	0.7863 mL	3.9313 mL	7.8626 mL
10 mM	0.3931 mL	1.9656 mL	3.9313 mL
50 mM	0.0786 mL	0.3931 mL	0.7863 mL

Please select the appropriate solvent to prepare the stock solution, according to the solubility of the product in different solvents. Please use it as soon as possible.

Note: The dilution table applies only to solid products. For liquid products, please calculate the stock solution based on the stated concentration and/or density.

Inhibitor · Natural Compounds · Compound Libraries · Recombinant Proteins

This product is for Research Use Only · Not for Human or Veterinary or Therapeutic Use

Tel:781-999-4286 E_mail:info@targetmol.com Address:34 Washington Street,Wellesley Hills,MA 02481