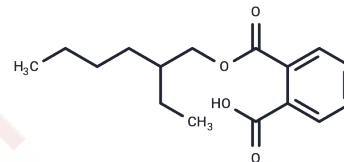


## Phthalic acid mono-2-ethylhexyl ester

## Chemical Properties

CAS No. :	4376-20-9
Formula:	C <sub>16</sub> H <sub>22</sub> O <sub>4</sub>
Molecular Weight:	278.34
Storage:	Powder: -20°C for 3 years   In solvent: -80°C for 1 year Actual storage temperature shall be subject to the COA.



## Biological Description

Description	Phthalic acid mono-2-ethylhexyl ester (Phthalic Acid Monoethyl Ester) is a major bioactive metabolite of diethylhexyl phthalate (DEHP), which inhibits the 17,20 lyase activity of CYP17. The Cyp17a1 gene is specifically targeted by MEHP, explaining the MEHP-induced suppression of steroidogenesis observed.
Targets(IC50)	Endogenous Metabolite, Cytochromes P450

## Solubility Information

Solubility	DMSO: 100 mg/mL (359.27 mM), Sonication is recommended. ( $< 1$ mg/ml refers to the product slightly soluble or insoluble)
In vivo Formulation	10% DMSO+40% PEG300+5% Tween-80+45% Saline: 3.3 mg/mL (11.86 mM), Sonication is recommended. <i>Please add the solvents sequentially, clarifying the solution as much as possible before adding the next one. Dissolve by heating and/or sonication if necessary. Working solution is recommended to be prepared and used immediately. The formulation provided above is for reference purposes only. In vivo formulations may vary and should be modified based on specific experimental conditions.</i>

## Preparing Stock Solutions

	1mg	5mg	10mg
1 mM	3.5927 mL	17.9636 mL	35.9273 mL
5 mM	0.7185 mL	3.5927 mL	7.1855 mL
10 mM	0.3593 mL	1.7964 mL	3.5927 mL
50 mM	0.0719 mL	0.3593 mL	0.7185 mL

Please select the appropriate solvent to prepare the stock solution, according to the solubility of the product in different solvents. Please use it as soon as possible.

Note: The dilution table applies only to solid products. For liquid products, please calculate the stock solution based on the stated concentration and/or density.

Reference

Ellero-Simatos S, et al. J Proteome Res. 2011 Dec 2;10(12):5493-502.

**Inhibitor · Natural Compounds · Compound Libraries · Recombinant Proteins**

This product is for Research Use Only · Not for Human or Veterinary or Therapeutic Use

Tel:781-999-4286 E\_mail:info@targetmol.com Address:34 Washington Street,Wellesley Hills,MA 02481